

# TIRES & TUBES

## CARLISLE TIRE & TUBE

2.80 x 2.50 x 4 - 4 Ply Carlisle  
Tire Size: 8-3/4 x 2-1/2"  
Maximum load: 210 lbs.



4" WHEEL	WGHT/LB	PART NUMBER	PRICE
Tire	1.722 lbs	TR100-005	17.96
Tube	.276	TB100-005	7.50

## AERO CLASSIC TIRE & TUBE

2.80 x 2.50 x 4 - 4 ply  
Tire size 8-1/2" x 2-7/8"  
Maximum load - 395 lbs.



4" WHEEL	WGHT/LB	PART NUMBER	PRICE
Tire	1.434	TR100-045	47.76
Tube 90° valve	.278	TB100-045	11.34

## AERO CLASSIC TIRE & TUBE

2.80 x 2.50 x 4 - 6 ply Aero Classic  
Nylon. Tire size 8-1/2" x 2-7/8".



4" WHEEL	WGHT/LB	PART NUMBER	PRICE
Tire	1.462	TR100-046	43.00
Tube 90° valve	.278	TB100-045	11.34

## CARLISLE TIRE & TUBE

4.10 x 3.50 x 4 - 4 ply Carlisle  
Tire size: 10-1/2 x 3-1/2"  
Max load 350 lbs.



4" WHEEL	WGHT/LB	PART NUMBER	PRICE
Tire	2.570 lbs	TR100-050	14.50
Tube 90° valve	.362	TB100-050	6.95

## SPECIALTY TIRE & TUBE

10 x 3.50 x 4 - 4 ply  
Tire size: 10" x 2-7/8".  
Maximum load 450 lbs.  
Inflate 60 lbs.  
Specialty Tire of America - formerly  
McCreary.



4" WHEEL	WGHT/LB	PART NUMBER	PRICE
Tire	2.172	TR100-018	49.99
Tube 90° valve	.364	TB100-018	18.44

## CARLISLE TIRE & TUBE

3.40 x 3.00 x 5 - 4 Ply Carlisle  
Tire Size: 10-3/8 x 3-1/4"  
Maximum Load : 380 lbs



5" WHEEL	WGHT/LB	PART NUMBER	PRICE
Tire	2.592 lbs	TR100-010	20.68
Tube	.396	TB100-010	8.50

## SHIN TIRE & TUBE

3.40 x 3.00 x 5 - 4 ply Shin  
Tire Size: 10-1/2"x 2-1/2".  
Max load 305 lbs.



5" WHEEL	WGHT/LB	PART NUMBER	PRICE
Tire	1.984	TR100-022	16.90
Tube 90° valve	.388	TB100-022	7.58

## SHIN TIRE & TUBE

4.10 x 3.50 x 5 - 4 ply Shin  
Tire Size: 11" x 3-1/2"  
Max load 380 lbs.



5" WHEEL	WGHT/LB	PART NUMBER	PRICE
Tire	2.336	TR100-055	16.95
Tube 90° valve	.412	TB100-055	7.70

## CARLISLE TIRE & TUBE

11 x 400-5 2 Ply Carlisle  
Tire Size: 11.1" x 4.1"  
Maximum load: 210 lbs.



5" WHEEL	WGHT/LB	PART NUMBER	PRICE
Tire	2.8 lbs	TR100-065	13.99
Tube	.436	TB100-040	8.90

## CHEN SHIN TIRE & TUBE

11 x 4.00 x 5 - 4,6 & 8 Ply Transmas-  
ter  
Tire Size: 11 x 4" both 6 ply & 8 ply.  
Load ratings:  
4 ply 325 lbs  
6 ply 625 lbs  
8 ply 850 lbs.



5" WHEEL	WGHT/LB	PART NUMBER	PRICE
Tire - 4 ply	3 lbs	TR100-066	16.24
Tire - 6 ply	2.633	TR100-040	16.99
Tire - 8 ply	2.798	TR100-041	19.99
Tube - curved stem	.521	TB100-040	8.90

# TIRES & TUBES

## AIR HAWK TIRE & TUBE

### SPECIALTY TIRE & TUBE

500 x 5 - 6 ply  
Tire size: 13-1/2" x 4".  
Maximum load - 1285 lbs.  
Inflate - 50 lbs.  
Specialty Tire of America - formerly  
McCreary.



5" WHEEL	WGHT/LB	PART NUMBER	PRICE
Tire	4.646	TR100-030	49.95
Tube 90° valve	1.198	TB100-030	53.97

## AEROTRAINER 500x5 TIRES/TUBES

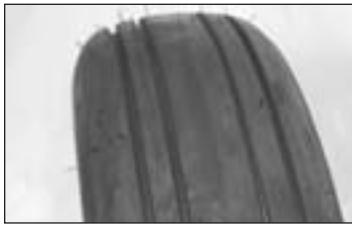
500 x 5 x 6 - 6 ply tire  
Tire Size: 13-1/2" x 4-1/4"  
Max. Load: 1285 lbs



5" WHEEL	WGHT/LB	PART NUMBER	PRICE
500x5- 6 ply	4.264	TR100-085	50.50
Tube to fit tire 90° valve	1.198	TB100-030	53.97

## CONDOR 500x5 TIRES/TUBES

500 x 5 - 6 ply tire.  
Tire Size: 13 x 4-1/2"  
Max. Load: 1285 lbs  
Weight 5.4 lbs  
Inflation pressure 50 lbs.



5" WHEEL	WGHT/LB	PART NUMBER	PRICE
500 x 5 - 6 ply	5.484lbs	TR100-105	69.99
Tubes	1.198	TB100-030	53.97

## MICHELIN AVIATOR

13-1/2 x 6  
500x5 - 6 ply tires. Load weight 1285  
lbs.



5" WHEEL	WEIGHT/LB	PART NUMBER	PRICE
Tire	5.582	MI5x5	92.14
Tube	1.195	TB100-030	53.97

## TITAN

8.00 x 6 - 4 ply Titan  
Tire Size 16-1/2" x 6-1/2"  
Max load 850 lbs.



6" WHEEL	WGHT/LB	PART NUMBER	PRICE
Tire	6.308	TR-MTAT8x6	36.95
Tube	1.424	TB-MTAT8x6	19.07

## CARLISLE TIRE & TUBE

4.10 x 3.50 x 6 - 4 Ply Carlisle  
Tire Size: 12-1/4 x 3-3/4"  
Maximum Load : 495 lbs



6" WHEEL	WGHT/LB	PART NUMBER	PRICE
Tire	3.534bs	TR100-095	19.49
Tube	.530	TB100-095	6.41

## CARLISLE TIRE & TUBE

13 x 500 x 6 - 4 Ply Carlisle  
Tire Size: 11-3/4x 4-5/8"  
Maximum Load : 440 lbs



6" WHEEL	WGHT/LB	PART NUMBER	PRICE
Tire	3.75 lbs	TR100-115	25.61
Tube	.624	TB100-115	6.28

## CARLISLE TIRE & TUBE

15 x 600 x 6 - 4-Ply Carlisle  
Tire Size: 13-1/2 x 6-5/8  
Maximum Load : 570 lbs  
Max PSI - 30 lbs.



6" WHEEL	WGHT/LB	PART NUMBER	PRICE
Tire	6.076	TR100-070	27.95
Tube straight valve	.650	TB100-070	7.50
tube 90° valve		TB100-7090	6.98

## AIRTRAC

15 x 6.00 x 6 - 6 ply  
Tire Size: 14 x 6.  
Specialty Tire of America - formerly  
McCreary.  
Max load 1950 Rated 120 mph.



6" WHEEL	WGHT/LB	PART NUMBER	PRICE
6Tire	6.086	TR100-075	73.92
Tube straight valve	1.320	TB100-075	41.90

# TIRES & TUBES

## MICHELIN AVIATOR

14-1/2 x 6  
15 x 600 x 6 ply Max load 2050 lbs  
Rated 160 mph



6" WHEEL	WEIGHT/LB	PART NUMBER	PRICE
Tire	7.640	MI15x6	92.80
Tube straight valve	1.320	TB100-075	41.90

## MICHELIN AVIATOR

16-1/4 x 5-1/4  
600 x 6 - 6 ply Load 1750



6" WHEEL	WEIGHT/LB	PART NUMBER	PRICE
Tire	8.948	MI6x6	118.00
Tube	1.888	TB100-060	42.94

## MICHELIN AVIATOR

18.75 h x 7 w  
700 X 6 - 6 ply Max load 1900 lbs



6" WHEEL	WEIGHT/LBS	PART NUMBER	PRICE
Tire	11.024	MI7x6	117.20
Tube straight valve	1.728	MIT7	55.00

## AEROTRAINER 600x6 TIRES/TUBES

600 x 6 - 6 ply tire  
Tire Size: 16 x 6  
Max Load: 1750 lbs.  
Weight: 6 lbs, 15 oz.



6" WHEEL	WGHT/LB	PART NUMBER	PRICE
600 x 6 tire	6.574	TR100-090	56.55
Tube to fit tire straight valve		TB100-060	42.94

## AIRHAWK

600 x 6 x 6 - 6 ply  
Tire Size: 16-1/2 x 5-1/2  
Maximum load - 1750 lbs.  
Specialty Tire of America - formerly  
McCreary.



6" WHEEL	WGHT/LB	PART NUMBER	PRICE
Tire	7.730	TR100-060	55.75
Tube straight valve	1.888	TB100-060	42.94

## CONDOR 600 x 6

600 x 6 - 6 ply tire  
Tire Size: 16-1/4 x 5  
Max. Load: 1750 lbs  
Weight 8.8  
Inflation pressure 42 lbs.



6" WHEEL	WGHT/LB	PART NUMBER	PRICE
Tire	8.970	TR100-110	76.49
Tube	1.888	TB100-060	42.94

## CARLISLE TIRE & TUBE

4.80 x 4.00 x 8 - 4 - Ply Carlisle  
Tire Size: 16 x 3-5/8  
Maximum Load : 765 lbs



8" WHEEL	WGHT/LB	PART NUMBER	PRICE
Tire	3.978	TR100-080	25.00
Tube	.718	TB100-080	6.73

## SHIN TIRE & TUBE

13 X 400 X 6 - 4 PLY CHENG SHIN.  
Maximum load 510 lbs, maximum in-  
flate 50 lbs. Use tube TB100-035  
which has a 90 degree valve.



6" WHEEL	WGHT/LB	PART NUMBER	PRICE
TIRE-13X400X6		TR100-035	17.50
TUBE-W/90 DEG STEM		TB100-035	8.49

## PROPER PRESSURE BETTER WEAR

**Over inflation** accelerates center tread wear, reduces traction and makes it more susceptible to cuts.

**Under inflation** accelerates shoulder wear and increases the chance of bruising sidewalls and shoulders

SIZE	PLY	PRESSURE GUIDE	
		LOAD LBS.	MAX PSI
500-4	6	1200	55
500-5	4	800	31
500-5	6	1285	50
500-5	10	2150	88
15/600-6	6	1950	68
600-6	4	1150	29
600-6	6	1750	42
600-6	8	2350	55

# NOTES