

# SPRUCE

## SITKA SPRUCE

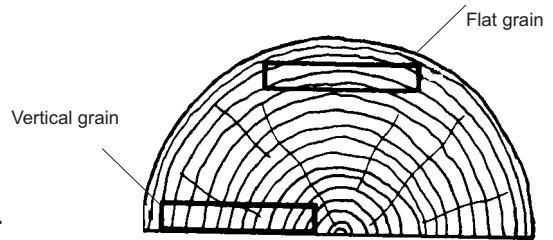
Larger than any other spruce in North America or perhaps in the world, its size is comparable to that of the huge Douglas fir. Sitka spruce grows in a strip along the Pacific coast from northern California to a little beyond Cook Inlet in Alaska, where in the coastal forests this species with western hemlock makes up the larger part of the stand.

Although Sitka spruce occasionally forms pure stands, it generally grows in mixture with other species. In Oregon and Washington it is associated with Douglas fir, grand fir, western hemlock, and western red cedar. Forest grown trees are tall and straight, with open conical crowns. Those approaching maturity have long cylindrical trunks, frequently free of branches to 40 to 80 feet, and often with spreading bases. Mature trees in Washington and Oregon commonly measure from four to six ft in diameter and more than 200 ft in height and attain an age of 400 to 450 years. In Alaska, average dimension of mature trees is somewhat less.

The wood of Sitka spruce is straight grained and comparatively uniform in texture, moderately light in weight, moderately soft, moderately stiff, moderately low in resistance to shock and easily worked. Very strong for its weight, it possesses greater strength and toughness than any wood of similar weight.

Because it has unusual strength for its weight and can be obtained in clear straight grained pieces of large size and uniform texture with few hidden defects, Sitka spruce is by far the most important wood for aircraft construction. The requirements for aircraft construction are so exacting; however, that only about five percent of the cut of Sitka spruce can be utilized for this purpose.

**WOOD ORDERS CANNOT BE CUT ON SATURDAY.**

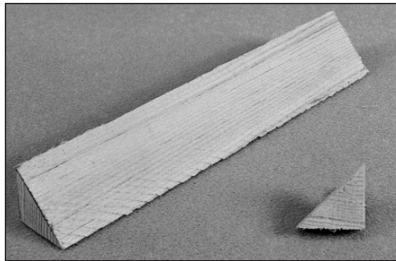


# CORNER BLOCKING & T-STRINGERS

## TRIANGULAR CORNER BLOCKING

90° corner blocking common. Special sizes and pricing available on request. Priced by the running foot. (Note: 8 ft or longer cannot be shipped UPS.)

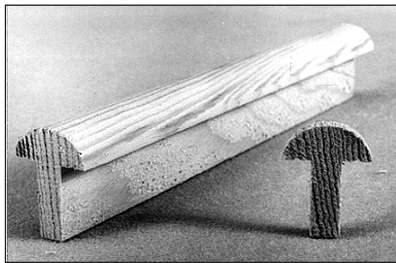
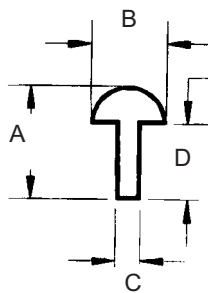
CRATING CHARGE:  
under 6 ft - \$6.00  
over 6 ft - \$12.00



SIZE	PART NUMBER	PRICE P/FOOT
1/4	TCB-1/4	2.50
3/8	TCB-3/8	2.50
1/2	TCB-1/2	2.68
5/8	TCB-5/8	2.92
3/4	TCB-3/4	3.00
7/8	TCB-7/8	3.37

## T-STRINGER

A = Thickness 1"  
B = Width 3/4"  
C = Stem 1/4"  
D = Under hat 3/4"  
Other sizes available - please inquire. Prices determined by sizes. 8 ft or longer cannot be shipped UPS.

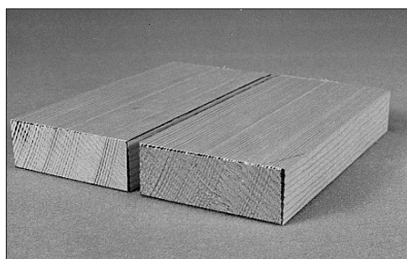


DESCRIPTION	PART NUMBER	PRICE P/FOOT
T-stringer (as illustrated)	TS-1	3.50

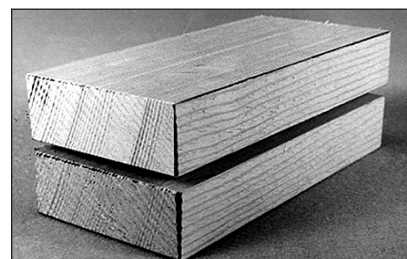
CRATING CHARGE:  
under 6 ft - 6.00  
over 6 ft - 12.00

AC 43.13-1A: Replacing solid-type spars with laminated type. Solid spruce spars may be replaced with laminated ones or vice versa, provided the material is of the same high quality. External plywood reinforcement must always be replaced with plywood as in the original structure.

Laminate: glue to achieve thickness



Edgeglue: glue to achieve width



# SPRUCE

## CAP STRIPS - PRICED PER LINEAL FOOT

THICKNESS IN INCHES	WIDTH IN INCHES																		
	3/16	1/4	5/16	3/8	7/16	1/2	5/8	3/4	7/8	1	1-1/8	1-1/4	1-3/8	1-1/2	1-3/4	2	2-1/4	2-1/2	
1/8	0.50	0.50	0.50	0.50	55	0.55	0.55	0.55	0.60	0.70	0.90	1.10	1.25	1.25	1.35	1.50	1.65	1.75	
3/16	0.50	0.50	0.50	0.55	0.60	1.05	1.10	1.20	1.20	1.25	1.30	1.35	1.40	1.50	1.60	1.70	1.75	1.80	
1/4		0.50	0.55	0.55	0.60	0.70	0.80	0.90	1.10	1.40	1.45	1.50	1.55	1.60	1.70	2.00	2.26	2.30	
5/16			0.90	1.00	1.10	1.20	1.35	1.45	1.55	1.65	1.70	1.80	1.85	1.90	2.00	2.25	2.35	2.40	
3/8				1.10	1.20	1.25	1.30	1.35	1.40	1.50	1.60	1.70	1.63	1.90	2.00	2.25	2.35	2.40	
7/16					1.60	1.70	1.80	1.90	2.25	2.15	2.25	2.50	2.75	3.00	2.21	3.12	3.50	4.00	
1/2						1.60	1.75	2.00	2.00	2.50	2.75	3.00	3.25	3.50	3.75	4.25	4.75	5.00	
5/8							1.85	2.00	2.25	2.50	2.50	2.75	2.95	3.25	3.25	4.25	4.35	4.50	
3/4								2.00	2.25	2.50	2.75	3.00	3.00	3.25	3.50	4.25	4.50	4.75	
7/8									2.00	2.25	2.50	2.75	3.00	3.00	3.25	3.50	4.50	4.25	4.75
1										3.00	3.25	3.25	3.25	3.50	3.75	4.75	5.50	6.00	
1-1/8											3.50	3.50	3.75	2.88	4.25	4.50	5.25	6.50	
1-1/4												4.25	4.25	4.50	4.75	5.00	5.75	6.50	
1-3/8													5.00	5.50	6.00	6.50	6.50	6.50	

Lengths: 7' and longer multiply by 1.111 to price per foot.  
 10' and longer multiply by 1.1764 to price per foot.  
 14' and longer multiply by 1.25 to price per foot.

CAPSTRIPS  
 CRATING FEE:  
 under 6 ft - 6.00 over 6 ft - 12.00

## SPAR STOCK - PRICED PER LINEAL FOOT

THICKNESS IN INCHES	WIDTH IN INCHES														
	2-3/4"	3"	3-1/4"	3-1/2"	3-3/4"	4"	4-1/4"	4-1/2"	4-3/4"	5"	5-1/4"	5-1/2"	5-3/4"	6"	
1/8	2.50	2.80	2.85	3.00	3.25	3.75	3.85	3.95	4.00	4.25	4.50	4.75	5.25	5.30	
3/16	1.90	2.29	2.49	2.67	2.88	3.50	3.55	3.65	3.75	3.81	4.00	4.17	4.37	4.55	
1/4	2.40	2.65	2.95	3.65	3.95	4.00	5.15	5.15	5.30	5.30	5.40	5.40	5.45	5.50	
5/16	3.50	4.00	4.50	5.00	5.50	6.00	6.50	7.00	7.50	8.00	8.00	8.00	8.00	8.00	
3/8	4.60	5.10	5.50	6.40	6.70	6.90	7.00	8.23	8.25	8.50	8.50		9.27	9.74	
1/2	5.65	5.79	6.00	6.50	7.00	7.25	7.50	7.75	8.72	9.00	9.25	9.50	9.75	10.00	
5/8	5.25	5.50	5.75	6.40	6.75	7.00	7.45	7.29	7.71	8.42	8.50	8.91	9.27	9.74	
11/16	5.25	5.50	6.00	6.25	6.75	7.50	7.75	8.00	8.25	8.50	9.00	9.25	9.50	10.50	
3/4	6.00	6.50	6.75	7.00	7.25	7.50	7.88	8.25	8.40	8.75	9.00	9.25	10.00	10.25	
13/16	6.00	6.50	6.75	7.00	7.25	7.50	8.00	8.50	9.00	9.50	10.00	10.50	11.00	11.50	
7/8	6.50	6.75	7.00	7.25	7.58	8.25	9.00	9.50	9.75	10.00	10.50	11.00	11.75	12.25	
15/16	7.00	7.00	7.00	7.25	8.25	8.25	9.25	9.89	10.00	10.50	11.00	11.50	12.65	13.00	
1	7.00	7.25	7.25	7.50	7.80	8.12	8.61	9.12	9.62	11.25	11.50	11.75	11.95	12.15	
1-1/8	7.25	8.00	8.50	9.00	9.50	10.25	10.50	10.75	11.00	11.50	12.00	12.50	13.00	13.50	
1-1/4	7.50	8.00	8.50	9.00	9.50	10.29	10.75	11.75	12.25	12.75	13.50	13.90	14.25	14.95	

THICKNESS IN INCHES	WIDTH IN INCHES											
	6-1/4"	6-1/2"	6-3/4"	7"	7-1/4"	7-1/2"	7-3/4"	8	8-1/4"	8-1/2"	8-3/4"	9"
1/8	8.00	9.00	10.00									
3/16	6.25	7.00	7.50	9.00	9.25	9.50	9.75	10.50	10.50	10.50		
1/4	7.50	9.25	9.25	10.00	11.50	11.00	11.20	11.50				
5/16	10.50	10.56	10.94	11.35	11.77	12.17	12.56	12.50	12.50	12.50		
3/8	10.14	11.93	12.00	11.35	11.77	12.17	12.56	12.74	13.37	13.80		
1/2	10.25	10.50	10.94	11.35	13.30	13.50	13.86	13.90	14.00	14.00		
5/8	10.14	10.56	10.94	11.95	11.77	12.17	12.56	12.74	12.74	12.74		
11/16	10.75	11.50	12.00	12.25	12.70	13.25	13.50	15.59	15.50	15.75		
3/4	11.00	11.25	11.50	12.00	12.25	12.50	12.75	13.00	13.50	13.80		
13/16	12.00	12.75	13.00	13.50	14.00	14.00	14.50	15.00	16.00	17.00		
7/8	12.68	13.18	13.67	14.20	14.71	15.19	15.70	16.23	16.75	17.24		
15/16	13.50	14.00	14.50	15.00	15.70	16.00	16.50	17.00	17.50	17.75		
1	12.25	13.18	13.67	13.25	14.00	14.25	14.50	16.21	16.75	17.75		
1-1/8	14.00	14.50	15.00	15.50	16.00	17.00	17.00	17.25	17.50	18.00		
1-1/4	15.60	16.25	17.00	17.50	18.00	18.50	19.00	19.50	20.00	20.60		

Lengths: 7' and longer multiply by 1.11 to price per foot.  
 10' and longer multiply by 1.17 to price per foot.  
 14' and longer multiply by 1.25 to price per foot.

SPAR STOCK CRATING FEE: \$30.00  
 STRINGER CRATING FEE: \$18.00

Important notes: 1. When ordering please state thickness, width and length in that order.  
 2. Please allow at least 4 weeks for delivery. Only 8 ft or less ship by UPS.