

AIRCRAFT PLACARDS BY

The below listed items are made of aluminum foil with a pressure sensitive backing which adheres to most any surface that is clean and dry. The facing is made with a special anodize process which will resist sun fade-out and surface abrasion. These are the original placards that went into production in 1969 and have been copied, with less quality, by others. The placard material and anodize process meets Federal Specifications GG-455B and MIL-P-15024-B. The adhesive meets MIL-P-6906-A.

These placards are 3.25" by 1.00".

These placards are 2.50" by .75".



23-1



44-1



29-1



103-1



24-1



47-1



30-1



243-1



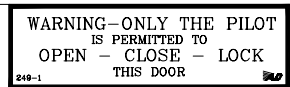
25-1



101-1



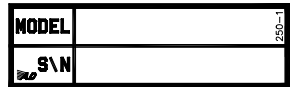
31-1



249-1



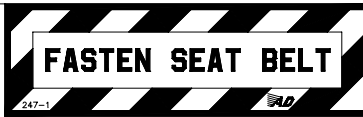
41-1



250-1



26-1



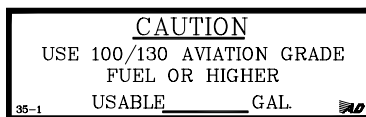
247-1



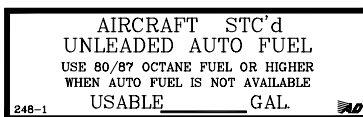
54-1



251-1



35-1



248-1



74-1

These placards are 2.00" by 2.00".

9-1 VFR

180° TO 359° COMPASS HEADINGS CRUISE AT EVEN THOUSANDS PLUS 500'

0° TO 179° COMPASS HEADINGS CRUISE AT ODD THOUSANDS PLUS 500'

3,000 FEET AGL & ABOVE

9-1

11-1 COMPASS DEVIATION CARD

TO FLY	STEER	TO FLY	STEER
N		180	
30		210	
60		240	
90		270	
120		300	
150		330	

11-1

14-1 I.C.A.O. ALPHABET

A ALFA	N NOVEMBER
B BRAVO	O OSCAR
C CHARLIE	P PAPA
D DELTA	Q QUEBEC
E ECHO	R ROMEO
F FOXTROT	S SIERRA
G GOLF	T TANGO
H HOTEL	U UNIFORM
I INDIA	V VICTOR
J JULIETT	W WHISKEY
K KILO	X XRAY
L LIMA	Y YANKEE
M MIKE	Z ZULU

14-1

52-1 VFR TRANSPONDER CODES

CODE	FUNCTION
0000	NEVER USE
1200	VFR
7500	HIJACK
7600	LOST COMM.
7700	EMERGENCY

52-1

252-1 N NUMBER HERE

TRANSMIT	VHF	RECEIVE
121.5	EMERGENCY	121.5
121.6 TO 121.9	GROUND CONTROL	121.6 TO 121.9
122.0	FLIGHT WATCH	122.0
122.2	FSS (RADIO)	122.2
122.75 OR 122.85	AIR TO AIR	122.75 OR 122.85

252-1

This placard is 1.50" X 1.00".

CAUTION
STATIC AIR
KEEP CLEAN

27-1

27-1

This placard is 4.20" X 1.25" and is hard aluminum.

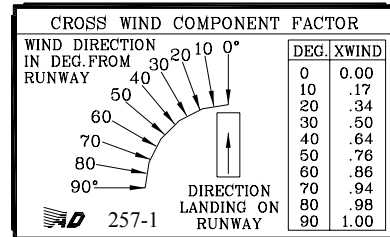
BEST AIRSPEED FOR

SLOWEST DESCENT POWER OFF	SHALLOWEST GLIDE
MOST FLIGHT TIME PER GALLON OF FUEL	BEST RATE OF CLIMB 0 TO 5,000 FT.
STEEPEST CLIMB	MOST MILES PER GALLON OF FUEL
BEST RATE OF CLIMB 5,000 TO 10,000 FT.	ECONOMY CRUISING
	NORMAL CRUISING

12-1

12-1

This placard is 3.15" X 1.95"



257-1