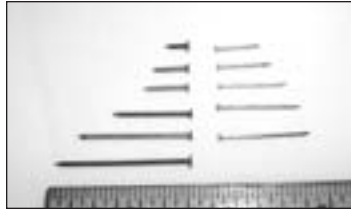


NAILS, GLUE & ADHESIVES

NAILS

Brass plated cement coated steel nails. 18 gauge (.042) is larger than 20 gauge (.030). Order by length x gauge. 1-1/4 and 1-1/2 are NOT brass plated.* Measured in inches.



LENGTH IN INCHES	18 QTY 1/4#	18 GAUGE PART NO.	PRICE 1/4 LB	20 QTY 1/4#	20 GAUGE PART NO.	PRICE 1/4 LB
3/8	-	-	-	2250	3/8x20	2.99
1/2	-	-	-	1750	1/2x20	3.18
5/8	-	-	-	1375	5/8x20	2.99
3/4	-	-	-	1125	3/4x20	2.49
7/8	-	-	-	1050	7/8x20	
1	-	-	-	875	1x20	2.38
1-1/2*	306	1-1/2x18	1.40			

CASCOPHEN ADHESIVE

A traditional 2-part resorcinol resin designed for use in the marine and aircraft industries. Cures at room temperature to produce a strong, durable and waterproof joint, resistant to most acids and organic solvents, oils and greases. Joints may be double or single spread, using a paint roller or trowel. Glue coverage: 55-70 lbs per 1000 sf. Mix ratio: 5 parts A to 1 part B by weight. Minimum use temperature: 70° F. Useful working life @ 70°: 3-1/4 hours. Clamp time @ 70° F: 8 hours. Full cure in 6 days. Meets MIL-A-22397-1 and MIL-A-46051.



KIT DESCRIPTION	PART NUMBER	PRICE P/KIT
Pint A, .25# B	CP1131-PT	11.90
Quart A, .5# B	CP1131-QT	21.57

RESORCINOL

Waterproof 2 part system resistant to outdoor exposure cold or boiling water, heat solvents and mold. Mix ratio - 4 to 1 by weight. Pot life 3-4 hours. Assembly time 15 min. UPS ground shipping only. Used for wood.



QUANTITY	PART NUMBER	PRICE EACH
Pint kit	0227R	20.42

REDIMIX DISPENSING SYSTEM

1:1 twin cartridge gun delivers mixed epoxy resin and hardener. Reusable/Disposable cartridge offer 8 oz. capacity and features perfectly blended, air-free epoxy. The unused material can be stored in cartridge for later use. It is ideal for injecting delamination and dry rot. The twin pistons are manually driven and primed with a thumb release. Each cartridge comes with a pair of molded pistons complete with precision O-rings, plus a cartridge tip seal for protecting the contents after partial usage. Cartridges are supplied empty and may be refilled if desired. The starter kit includes 1 gun, 2 cartridges, 4 mixer tubes. Cartridge include piston and tip seal. GUNS PURCHASED BEFORE 10/2001 - PARTS NO LONGER AVAILABLE



DESCRIPTION	PART NUMBER	PRICE EACH
Gun	RDMX-GUN	29.69
Mixer tube	RDMX-TUBE	2.99

PG101 GLUE

Ready-to-use paintable, sandable one-part polyurethane adhesive for wood, foam, concrete, marble and most rigid surfaces. Weatherproof and waterproof, gap filling, solvent free, fast curing. 4 fluid oz with applicator tip covers 8 sq feet of glue surface. 90% cures in 1-4 hours, full cure 24 hrs. Cured material may be removed with sandpaper or sharp tool.



DESCRIPTION	PART NUMBER	PRICE EACH
4 fluid ounces	PG101-4	7.00
8 fluid ounces	PG101-8	11.95

QUICK CURE 5 MINUTE EPOXY

BY SYSTEM THREE - For fast repairs and bonding to wood, most metals, fiberglass, ceramics concrete, glass leather and many plastics. Will not bond to polyethylene, teflon or similar rubber and plastic materials. By mixing equal parts of A & B, this product will harden in about 5 minutes at room temperature. Not recommended for service above 200° F or for long immersion in water. Pint kit equals 2 - 1/2 pint containers, Quart kit equals 2 pint containers.



DESCRIPTION	PART NUMBER	PRICE EACH
Pint kit	T-5-PT	29.99
Quart kit	T-5-QT	45.00

T-88 ADHESIVE

Adhesive is non-brittle, 2 part adhesive gives superior results under adverse conditions. Will bond aluminum, steel and wood. Amber color becomes virtually invisible when varnished. When fully cured unaffected by water, oil, gasoline and virtually all chemicals. Not affected by freezing temperatures, resin can be heated if it becomes crystallized. Pot life 45 min. at 70°. Work time 2 hours. Mix ratio: 100 to 83 by weight. 1 to 1 by volume.



DESCRIPTION	PART NUMBER	PRICE EACH
1/2 pint kit	T-88-1/2PT	18.40
pint kit	T-88-PT	23.82
quart kit	T-88-QT	35.52
1/2 gallon kit	T-88-1/2G	62.57
gallon kit	T-88-GAL	120.16

ES6279 STRUCTURAL ADHESIVE

A paste viscosity, high strength adhesive for structural bonds to a variety of surfaces. Good gap filling capabilities for loose adhesive joints. Tough, durable bonds when cured. Light tan, smooth paste has a pot life of 20-30 minutes at 77°, cure time 6-8 hours at 77°. Mix ratio - 1 to 1 by weight or volume.



QUANTITY	PART NUMBER	PRICE EACH
Quart kit - 6 lb.	ES6279-QT	61.73
Gallon kit - 24 lb.	ES6279-GAL	186.23

NAILS, GLUE & ADHESIVES

HYSOL GLUE

Tough epoxy adhesive which attains structural properties with only a room temperature cure. Bonds metal, wood, most plastics and glass. Retains high bond strength when exposed to many fluids including water, humidity and salt spray. After mixing, adhesive becomes thixotropic and non sagging. Apply thin layer to each surface. Mix volume: 4:1, Weight: 100:23. Potlife 50 minutes at 77° F. Shelf life 1 year at 75°, Cure 5 days at 75°. UPS ground shipping only.



QUANTITY	PART NUMBER	PRICE EACH
2 lb kit	EA-9430	55.50

WELDWOOD

Water resistant plastic resin. FAA certified unaffected by solvents, gasoline and oil. Mix ratio 5 to 2 by volume. Pot life 4-5 hours. Set time 15 min. Mix instructions: Measure by volume 5 parts plastic resin powder to 2 parts cold water into a container. (Slightly tap the sides of the measuring container to let plastic resin powder settle for a more accurate measurement.) Add a small amount of water and stir to a heavy paste consistency. Continue to add the remainder of water and stir until mixture is about as thick as heavy cream. Glue is ready to use immediately. (10 parts powder and 6 parts water by weight) USE FOR WOOD



QUANTITY	PART NUMBER	PRICE -1 LB	PRICE -5 LB
Weldwood 1 lb	203-1	4.90	

3M STRUCTURAL GLUE

"Scotch Weld" brand two part epoxy type structural adhesive. Cures at room temperature to form strong, highly flexible bonds. Will bond rubber, metal, wood, most plastics and masonry. Pot life up to 90 minutes after mixing. 2 oz tube kit has a 1 year shelf life. Adhesive is gray in color.



DESCRIPTION	PART NUMBER	PRICE EACH
2 oz tube kit	2216B/A	39.95

PILOBOND #20

A general purpose adhesive. Bonds anything to anything. Recommended for positive mounting of various types of plastic accessories on aircraft fabric. Reduce with MEK when needed. 1 yr shelf life.



DESCRIPTION	PART NUMBER	PRICE EACH
PINT CAN	10-10-2-PT	11.41

MAX 1 ADHESIVE

Max I is a new type of super adhesive known as alpha-cyanacrylate. A unique chemical reaction allows permanent bonding, totally unaffected by heat and cold. Permanently bonds wood, steel, aluminum, porcelain, glass, rubber, hard PVC, ABS, and other common plastics. Non-toxic and biodegradable. Size: 20 grams. Refrigeration is needed for long term storage.



DESCRIPTION	PART NUMBER	PRICE EACH
20 grams adhesive	MAX-20	14.95

BIODEGRADABLE TEMP ADHESIVE

If you've ever had difficulty placing a washer, a nut, or a screw in a hard to reach spot, you need STICKIT--the biodegradable temporary adhesive that holds small parts firmly in position, allowing you to work more easily and get the job done faster.



DESCRIPTION	PART NUMBER	PRICE EACH
ADHESIVE	STICK-IT	13.50

TITEBOND II GLUE-PINT

One-part exterior wood glue which passes the ANSI Type II water resistance specification (not for water immersion). Offers superior strength, excellent sandability, and water cleanup. May be spread with brush or roller. Assembly time: 5 min. @ 70 degrees. Bond strength @ full set: 3750 psi. Min. Spread: 45 sqft/pint. Shelf life: 12 months.



DESCRIPTION	PART NUMBER	PRICE EACH
PINT	5004	7.45

HOMEBUILDERS ADHESIVE KIT

A 2-part, high strength structural adhesive system for use with any combination of composites, acrylic & other plastics, wood, metals etc. Cured adhesive displays excellent chemical & impact resistance over a temp range of -40°F to 275°F. Shear strength: (CRS) 4800 psi; (Alum) 4150 psi. Open time: 25-30 min @ 72°F. Clamp time: <2 hrs. Full Cure: 8 hrs. Shelf life @ 72°F: 6 mos. Coverage: 620" of 1/4" bead/cartridge. Kit includes a dual cartridge gun, 2-250ml dual adhesive cartridges, & 4 static mixer nozzles.



DESCRIPTION	PART NUMBER	PRICE EACH
REPLACEMENT CARTRIDGE	5375-250	39.50
REPLACEMENT MIXERS	MXR26	0.75