

FINISHING-PAINT SYSTEMS-SUPERFLITE

SUPERFLITE SYS VI TOPCOATS - QUARTS



This is the final step for the System VI cover and finish system. If you want an extremely durable, long lasting, high-gloss "wet look" finish, this is the paint to use. This is a specially formulated, catalyst-activated, high solids, low VOC polyurethane paint that not only works great with fabric, it is also the perfect choice for aluminum, fiberglass, and composite material. This will prevent ugly mismatches between unlike surfaces like the engine cowling and the fabric. The match is perfect every time. Color choices are virtually unlimited. Recommended for use with the complete Superflite System VI. Seven year shelf life if unopened. One year shelf life if opened without catalyst. Fabric Primer Filler, use SF6500. Metal Primer, use SF10. Comes in 1 quart can. Contains 24 fluid ounces, with room for required catalyst. Ask for a color chart. Topcoats also available in Gallons.

FABRIC PRIMER BASE



SF6500-04 Primer Base - For use on fabric-covered aircraft. Superflite primer/filler is a catalyzed polyester material with a pot life of approximately 1 hour. The mixture consists of 1 part SF6500 Primer Base, 1 part SF6600 Catalyst, 1/2 part SF6700 Flex Agent, and enough SF6820 Reducer to provide a viscosity of approximately 17 seconds through a number 2 viscometer cup for the initial coat. This thin material will penetrate the weave and provide excellent adhesion. Subsequent coats may be reduced less. Apply a second coat as soon as first coat is dry to touch. Cure overnight. Temperature of 60 degrees minimum must be maintained during cure time. FAA-approved. Shelf life of 7 years - unopened; shelf life of 1 year - opened. Mix ratio 1 primer, 1 catalyst, 1/2 flex agent.

DESCRIPTION	PART NUMBER	PRICE
QUART	SF6500-QT	42.87
GALLON	SF6500-G	171.45

ENGINE ENAMELS



Fast drying engine enamels developed specifically for air cooled aircraft engines used in the light duty aviation industries. Superflite enamels feature superior adhesion, high gloss finish and heat resistance. May be used as supplied or for best spray add 10-15 percent enamel reducer by volume just prior to application. When properly covered at 77 degrees, Superflite enamel will maintain a sprayable viscosity for an indefinite period of time. May be applied to properly treated steel or aluminum, epoxy primers and etching primers. Pretreat surfaces by washing with mild detergent rinsing well with water. Dry, sand featheredge surface, and wipe with superwash cleaner. Apply 1-3 coats, medium wet to wet, overlap 50 percent waiting 5-10 minutes or until surface is dry for repeat coatings. Application conditions require a minimum temperature of 50 percent, maximum temperature of 100 percent with less than 80 percent humidity preferred. Sold in quarts only in TCM Gold, Lycoming Gray or High Gloss Black. SHips ORMD ground, with no HazMat fees.

DESCRIPTION	PART NUMBER	PRICE
TCM GOLD ENAMEL	SF2000-QT	17.00
LYCOMING GRAY ENAMEL	SF2100-QT	17.00
GLOSS BLACK ENAMEL	SF2200-QT	17.00

COLOR	PART NUMBER	PRICE
SIGNAL LIGHT GRAY	SF2106-QT	43.50
DARK VIOLET POLY	SF2107-QT	56.50
BLANKE YELLOW	SF2108-QT	68.25
BERNATH WHITE	SF2110-QT	43.50
AZTEC SILVER	SF2111-QT	56.50
LT ANTELOPE FIREMIST	SF2112-QT	56.50
ATLAS GREY METAL	SF2113-QT	47.25
MEADOW GREEN	SF2114-QT	68.25
STRATO GREEN	SF2115-QT	56.50
GRAPHITE POLY	SF2117-QT	47.25
WINE METALLIC	SF2118-QT	68.25
SUN VALLEY IVORY	SF2119-QT	43.50
ORACLE RED	SF2123-QT	68.25
ORANGE YELLOW	SF2126-QT	43.50
INSIGNIA RED	SF2128-QT	80.00
INSIGNIA BLUE	SF2129-QT	47.25
INSIGNIA WHITE	SF2130-QT	43.50
STINSON MAROON	SF2131-QT	80.00
TORCH RED	SF2132-QT	80.00
JUNEAU WHITE	SF2133-QT	43.50
HUSKY YELLOW	SF2134-QT	56.50
SUNRISE RED	SF2135-QT	80.00
MEDITERRANEAN BLUE	SF2136-QT	47.25
MEDIUM GRAY	SF2137-QT	43.50
PIPER CUB YELLOW	SF2138-QT	80.00
POLAR GRAY	SF2148-QT	43.50
DIANA CREAM	SF2149-QT	56.50
SACRAMENTO GREEN	SF2155-QT	47.25
INTENSE BLACK	SF2176-QT	43.50
STARLIGHT BLUE	SF2415-QT	47.25
INCA GOLD	SF2425-QT	56.50
SILVERADO SILVER	SF2433-QT	56.50
DAYTONA WHITE	SF2437-QT	43.50
CADILLAC RED	SF2438-QT	56.50
PEPSI BLUE	SF2439-QT	47.25
BAHAMA BLUE	SF2442-QT	43.50
LEMON YELLOW	SF2445-QT	68.25
JAGUAR GREEN	SF2449-QT	56.50
CLARET	SF2450-QT	80.00
ROYAL BLUE	SF2451-QT	47.25
MATTERHORN WHITE	SF2452-QT	43.50
FLEET WHITE	SF2453-QT	43.50
LOCKHAVEN YELLOW	SF2454-QT	80.00
SNELL YELLOW	SF2455-QT	47.25
SPRUCE METALLIC	SF2456-QT	56.50
CITRUS YELLOW	SF2458-QT	68.25
CESSNA SUNSET RED	SF2460-QT	80.00
MATADOR RED	SF2461-QT	68.25
CRUISER ORANGE	SF2462-QT	68.25
CESSNA TIGER ORANGE	SF2463-QT	56.50
OCALA ORANGE	SF2464-QT	47.25
DEROSIER SILVER	SF2466-QT	47.25
MAULE YELLOW	SF2467-QT	37.95
LIME GREEN	SF2468-QT	68.25
LAKELAND BLUE	SF2469-QT	43.50
NASSAU TURQUOISE	SF2470-QT	43.50
MAULE BLUE	SF2471-QT	56.50
SPITFIRE RED	SF2472-QT	80.00
CESSNA VESTAL WHITE	SF2473-QT	43.50
SANDALWOOD	SF2474-QT	47.25
BUCKSKIN	SF2475-QT	43.50
HICKORY BROWN	SF2476-QT	56.50
MOCHA BROWN	SF2477-QT	47.25
BRIGHT RED	SF2498-QT	79.97
MAULE YELLOW	SF3467-QT	47.25

FINISHING-PAINT SYSTEMS-SUPERFLITE

SUPERBOND FABRIC ADHESIVE

Adhesive used to cement the fabric to the structure. Available in quarts and gallons.



DESCRIPTION	PART NUMBER	PRICE
FABRIC ADHESIVE	SFSUPERBOND-G	89.50
FABRIC ADHESIVE	SFSUPERBOND-QT	26.75

DACPROOFER

Dacproofer #300. Fabric primer coating (blue in color) used after cloth is tautened. Coating penetrates the weave and bonds to itself to the back-side of the cloth completely surrounding and encapsulating each individual strand. This is the first coat applied to the fabric after ironing. Reduce with #132 retarder thinner only for proper dry time. May be applied with short nap roller. Available in gallon and 5 gallon sizes. Thin 1:1.



DESCRIPTION	PART NUMBER	PRICE
DACPROOFER GALLON	SF300-G	36.25
DACPROOFER 5 GALLON	SF300-5G	168.95

SPRAFILL

Spra-Fill #301. Apply after the dacproofer #300. The SpraFil coats bond securely to the dacproofer giving superior adhesion under all temperature conditions. Must be sprayed. Preferred reducer is #131; however, humid conditions require thinning with #132 to prevent blushing. Available in gallon and 5 gallon sizes. Thin 1:1.



DESCRIPTION	PART NUMBER	PRICE
GALLONS	SF301-G	41.75
5 GALLON	SF301-5G	198.31

CLEAR BUTYRATE

Clear Butyrate, 12% Solids - #125. System I. Used before SpraFill for build up. Also used as a base for the color coat mixtures. Available in gallon and 5 gallon sizes. Thin with #131 butyrate thinner. Thin 1:1.



DESCRIPTION	PART NUMBER	PRICE
CLEAR BUTYRATE SYSTEM 1 GALLON	SF125-G	41.00
CLEAR BUTYRATE SYSTEM 1 5 GALLON	SF125-5G	193.50
CLEAR BUTYRATE - 15% TOP COAT	SF1500-55G	1985.75

THINNERS - BUTYRATE

Butyrate Thinner #131. Thinner used with SpryFil #301, and Butyrate #125. Available in gallon and 5 gallon sizes.



DESCRIPTION	PART NUMBER	PRICE
BUTYRATE THINNER SYST 1 GALLON	SF131-G	22.25
BUTYRATE THINNER 5GAL	SF131-5G	100.12
BUTYRATE THINNER 55GAL	SF131-55G	935.25

THINNERS RETARDING

Butyrate Retarding Thinner #131. Thinner used exclusively with #300 Dacproofer; during humid conditions with Sprayfil #301 and with Butyrate #125. When used with the #125 and color top coats creates a higher gloss finish because it slows the drying time. Available in gallon and 5 gallon sizes.



DESCRIPTION	PART NUMBER	PRICE
GALLONS	SF132-G	33.75
5 GALLONS	SF132-5G	151.87

REJUVENATOR

Butyrate Rejuvenator #133 used during repair of punctures, tears and cracks in the dope film. When dope softens, use your finger and blend the crack together. Available in gallon and 5 gallon sizes.



DESCRIPTION	PART NUMBER	PRICE
GALLONS	SF133-G	62.50
5 GALLONS	SF133-5G	281.25

BRUSH GLUEMASTER CAN

Can with the brush attached" simplifies gluing fabric and tapes to the structure. Pour either the Superbond glue or U500/SFMEK mixed glue into can. When finished clean the brush with MEK and attach the black cap to the end of the can. The can will now store the glue mixture. To keep the glue from drying in the can, use a tire cap to seal the end.



DESCRIPTION	PART NUMBER	PRICE
25 MM CAN	SFKA25B25	42.75

FINISHING-PAINT SYSTEMS-SUPERFLITE

SUPERFLITE FORD VISCOSITY CUPS

#4 Ford viscosity cup. The Superflite manuals call for a #2 Zahn cup in measuring the viscosity of the primer and topcoat, but with the conversions below, a #4 Ford cup is much less expensive viscosimeter. This cup is made of molded CAB plastic, and it's designed to hook over the edge of the can while measuring the viscosity of the liquid. Here are the proper #2 Zahn to #4 Ford conversions: 17 seconds in the Zahn cup is equal to 10.88 seconds in the Ford cup; 23 seconds in the Zahn cup is equal to 14.72 seconds in the Ford cup.



DESCRIPTION	PART NUMBER	PRICE
MOLDED CAB PLASTIC	SF-W3530	25.99

CATALYST - EPOXY PRIMER

Epoxy Primer Catalyst (1 quart) - FAA approved. To be mixed 2 to 1 - primer to catalyst, with SF10 Epoxy Primer. For application on metal, fiberglass, and other composite materials. Unopened it has a shelf life of two years. Opened, its shelf life is one month.



DESCRIPTION	PART NUMBER	PRICE
QUART	SF320-QT	63.06
GALLON	SF320-G	140.46

CATALYST FABRIC PRIMER BASE

SF6600-04 Primer Catalyst - Essentially a drying agent, this is designed to be mixed with the SF6500 Primer Base, SF6700 Flex Agent, and the SF6820 Reducer to use as the primer/filler coat in Superflite's System VI. For complete & detailed instructions on the use of SF6600, consult the Superflite System VI manual. FAA-approved. Shelf life of two years - unopened; shelf life of 14 days - opened. Mix ratio 1 primer, 1 catalyst, 1/2 flex agent.



DESCRIPTION	PART NUMBER	PRICE
QUART	SF6600-QT	48.18
GALLON	SF6600-G	178.08

REDUCERS COOL, WARM, MEDIUM, HOT

SF6820-01 Medium Temperatures Reducer 70-80 degrees. For mixture with the Superflite primer. It reduces the primer/filler to make it more "sprayable." This particular reducer is for use in temperatures of 70-80 degrees. FAA-approved. Unlimited shelf life - opened or unopened. Available in 1 gallon cans only.



DESCRIPTION	PART NUMBER	PRICE
COOL TEMP 60-70 DEG	SF6800-G	49.23
MED TEMP 70-80 DEG	SF6820-G	49.23
WARM TEMP 75-80 DEG	SF6840-G	49.23
HOT TEMP 85 DEG & UP	SF6860-G	49.23

ADHESIVE - GREEN TINTED

U500-04 Green Tint Adhesive - Mixed with Methyl Ethyl Ketone (MEK) to provide the adhesive for the fabric and surface tapes. A thin coat of U500 & MEK is the perfect "glue" for the fabric and tapes. The green tint allows you to see where the glue has been applied. FAA-approved. Comes in a 1-quart can.



DESCRIPTION	PART NUMBER	PRICE
ADHESIVE QUART	SFU500-QT	28.68
ADHESIVE GALLON	SFU500-G	60.72

MEK

Methyl Ethyl Ketone. Used to thin the Superflite System VI U500 green adhesive. Superflite MEK is a high grade purity.



DESCRIPTION	PART NUMBER	PRICE
METHYL ETHYL KETONE	SF-MEK-G	44.46

FINISHING - PAINT SYSTEMS

ENGINE ENAMELS TEMPO

Modified alkyd enamel formula is designed to resist the high heat demands of engines, while exhibiting excellent corrosion and fuel resistance. Dries tack-free in 15-30 minutes, full dry in 1 hour. 16 oz aerosol cans.



DESCRIPTION	PART NUMBER	PRICE EACH
Aluminum	A207	6.50
Olds Continental Gold	A239	6.50
Gloss Black	203	5.99

AIRCRAFT ENAMELS TEMPO

Paints specially formulated to adhere to all interior/exterior aluminum and steel surfaces. Dries tack-free in 15-30 minutes, full dry in 1 hour. 16 oz. aerosol can.



DESCRIPTION	PART NUMBER	PRICE EACH
Black	A1100	6.89
Flat Black	A1102	6.99
Gloss White	A1109	6.99

TEMPO ZINC CHROMATE SPRAY PRIMER

Tempo Aviation Primer is ideal for use as a base coat for all aluminum, magnesium and nonferrous surfaces. Prevents corrosion and oxidation. Specifically formulated for use on airframes, exterior and interior aluminum. Contains zinc oxide, 11 oz. can. Mil-P-8585A. UPS ground only - no Air.



DESCRIPTION	PART NUMBER	PRICE EACH
YELLOW	7-6889	7.25
GREEN	7-6889A	7.25

TEMPO ZINC OXIDE PRIMER AEROSOL

Safer to use than zinc chromate, Tempo's zinc oxide primer provides maximum adhesion to bare aluminum & steel. Displays excellent corrosion & abrasion resistance, as well as heat resistance to 180°F. Dries tack-free in 10 min; recoat in 2 hrs. Net wt: 12 oz.



DESCRIPTION	PART NUMBER	PRICE EACH
YELLOW ZINC OXIDE	A801	6.99
GREEN ZINC OXIDE	A802	7.99

FINISHING-PAINT SYSTEMS-AEROTHANE

AEROTHANE ENAMEL GALLON

Provides excellent solvent, chemical, abrasion and weather resistance. A tough, flexible, high gloss two part polyurethane enamel formulated especially for fabric covered aircraft surfaces and marine surfaces subjected to flexing loads. Recommended as a premium quality, high gloss fabric finish over Stits POLY-FIBER Covering Materials, and all primed metal and fiberglass components of fabric covered aircraft. Colors filled to 3/4 full. Order by Part Number: AO-Enter Color Number - QT=QUART, GAL = GALLON Mix Ratio: QT: 3/4 qt. base: 1/2 pt. catalyst GAL: 3/4 g. base: 1 qt. catalyst Thin with UE-820. Quarts and gallons must be sent UPS ground only.



AEROTHANE ENAMEL QUART

Provides excellent solvent, chemical, abrasion and weather resistance. A tough, flexible, high gloss two part polyurethane enamel formulated especially for fabric covered aircraft surfaces and marine surfaces subjected to flexing loads. Recommended as a premium quality, high gloss fabric finish over Stits POLY-FIBER Covering Materials, and all primed metal and fiberglass components of fabric covered aircraft. Colors filled to 3/4 full. Order by Part Number: AO-Enter Color Number - QT=QUART, GAL = GALLON Mix Ratio: QT: 3/4 qt. base: 1/2 pt. catalyst GAL: 3/4 g. base: 1 qt. catalyst Thin with UE-820. Gallons require hazardous material fees. Quarts and gallons must be sent UPS ground only.



COLOR	CATALYST	PART NUMBER	PRICE
OCALA ORANGE	U865-QT	AO181-G	113.15
INSIGNIA WHITE	U865-QT	AO105-G	113.15
JUNEAU WHITE	U865-QT	AO110-G	113.15
GLACIER WHITE	U865-QT	AO117-G	113.15
DAYTONA WHITE	U865-QT	AO120-G	113.15
TUCSON CREAM	U865-QT	AO125-G	131.80
DIANA CREAM	U865-QT	AO131-G	131.80
SUN VALLEY IVORY	U865-QT	AO132-G	131.80
LEMON YELLOW	U865-QT	AO136-G	131.80
FEDERAL YELLOW	U865-QT	AO139-G	131.80
ORANGE YELLOW	U865-QT	AO140-G	131.80
EAGLE YELLOW ORANGE	U865-QT	AO142A-G	131.80
CUB YELLOW	U865-QT	AO143-G	131.80
LOCKHAVEN YELLOW	U865-QT	AO145-G	131.80
J3 OEM YELLOW	U865-QT	AO146-G	131.80
PORTLAND GREEN	U865-QT	AO151-G	131.80
PORTLAND GREEN	U865-QT	AO156-G	131.80
CUBY SPORT TR GREEN	U865-QT	AO157-G	131.80
FOREST GREEN	U865-QT	AO160-G	131.80
LAKELAND BLUE	U865-QT	AO165-G	131.80
BAHAMA BLUE	U865-QT	AO170-G	131.80
AN TRUE BLUE	U865-QT	AO173-G	131.80
INSIGNIA BLUE	U865-QT	AO176-G	131.80
EAGLE BLUE	U865-QT	AO177-G	131.80
CRUISER ORANGE	U865-QT	AO180-G	131.80
PUMPKIN ORANGE	U865-QT	AO182-G	131.80
INTERNATIONAL ORANGE	U865-QT	AO183-G	131.80
CE RED	U865-QT	AO187-G	131.80
MADRID RED	U865-QT	AO189-G	131.80
TENNESSEE RED	U865-QT	AO190-G	131.80
PONTIAC RED	U865-QT	AO191-G	131.80
SANTA FE RED	U865-QT	AO195-G	131.80
BOSTON MAROON	U865-QT	AO196-G	131.80
STINSON MAROON	U865-QT	AO197-G	131.80
ELSINORE BROWN	U865-QT	AO203-G	131.80
BERMUDA TAN	U865-QT	AO205-G	131.80
OLIVE DRAB	865-QT	AO208-G	131.80
POLAR GREY	U865-QT	AO210-G	131.80
OAK GREEN	U865-QT	AO212-G	131.80
AG CAT GREY	U865-QT	AO213-G	131.80
DAKOTA BLACK	U865-QT	AO215-G	131.80
JASPER GREY	U865-QT	AO219-G	131.80
NEVADA SILVER	U865-QT	AO220M-G	131.80
RANCHO SILVER	U865-QT	AO222M-G	131.80
CHAMPION YELLOW	U865-QT	AO240-G	131.80
AG CAT YELLOW	U865-QT	AO242-G	131.80
RENO GOLD	U865-QT	AO301M-G	131.80
RAINBOW PURPLE	U865-QT	AO350-G	108.90
EAGLE PURPLE	U865-QT	AO361-G	131.80

COLOR	CATALYST	PART NUMBER	PRICE
INSIGNIA WHITE	U865-1/2PT	AO105-QT	34.60
JUNEAU WHITE	U865-1/2PT	AO110-QT	34.60
GLACIER WHITE	U865-1/2PT	AO117-QT	34.60
DAYTONA WHITE	U865-1/2PT	AO120-QT	34.60
TUCSON CREAM	U865-1/2PT	AO125-QT	39.95
DIANA CREAM	U865-1/2PT	AO131-QT	39.95
SUN VALLEY IVORY	U865-1/2PT	AO132-QT	39.95
LEMON YELLOW	U865-1/2PT	AO136-QT	39.95
FEDERAL YELLOW	U865-1/2PT	AO139-QT	39.95
ORANGE YELLOW	U865-1/2PT	AO140-QT	39.95
EAGLE YELLOW ORANGE	U865-1/2PT	AO142A-QT	39.95
CUB YELLOW	U865-1/2PT	AO143-QT	39.95
LOCKHAVEN YELLOW	U865-1/2PT	AO145-QT	39.95
J3 OEM YELLOW0	U865-1/2PT	AO146-QT	39.95
EVERGLADES GREEN	U865-1/2PT	AO151-QT	39.95
PORTLAND GREEN0	U865-1/2PT	AO156-QT	39.95
CUBY SPORT TR GREEN	U865-1/2PT	AO157-QT	39.95
FOREST GREEN	U865-1/2PT	AO160-QT	39.95
LAKELAND BLUE	U865-1/2PT	AO165-QT	39.95
BAHAMA BLUE	U865-1/2PT	AO170-QT	39.95
AN TRUE BLUE	U865-1/2PT	AO173-QT	39.95
INSIGNIA BLUE	U865-1/2PT	AO176-QT	39.95
EAGLE BLUE	U865-1/2PT	AO177-QT	39.95
CRUISER ORANGE	U865-1/2PT	AO180-QT	39.95
PUMPKIN ORANGE	U865-1/2PT	AO182-QT	39.95
INTERNATIONAL ORANGE	U865-1/2PT	AO183-QT	39.95
CE RED	U865-1/2PT	AO187-QT	39.95
MADRID RED	U865-1/2PT	AO189-QT	39.95
TENNESSEE RED	U865-1/2PT	AO190-QT	39.95
PONTIAC RED	U865-1/2PT	AO191-QT	39.95
SANTA FE RED	U865-1/2PT	AO195-QT	39.95
BOSTON MAROON	U865-1/2PT	AO196-QT	39.95
STINSON MAROON	U865-1/2PT	AO197-QT	39.95
ELSINORE BROWN	U865-1/2PT	AO203-QT	33.95
BERMUDA TAN	U865-1/2PT	AO205-QT	39.95
OLIVE DRAB	U865-1/2PT	AO208-QT	39.95
POLAR GREY	U865-1/2PT	AO210-QT	39.95
OAK GREEN	U865-1/2PT	AO212-QT	39.95
AG CAT GREY	U865-1/2PT	AO213-QT	39.95
FEDERAL GREY	U865-1/2PT	AO213A-QT	39.95
DAKOTA BLACK	U865-1/2PT	AO215-QT	39.95
JASPER GREY	U865-1/2PT	AO219-QT	39.95
NEVADA SILVER	U865-1/2PT	AO220M-QT	39.95
RANCHO SILVER	U865-1/2PT	AO222M-QT	39.95
CHAMPION YELLOW	U865-1/2PT	AO240-QT	39.95
AG CAT YELLOW	U865-1/2PT	AO242-QT	39.95
RENO GOLD	U865-1/2PT	AO301M-QT	39.95
PIPER TRAINER BLUE	U865-1/2PT	AO318M-QT	39.95
RAINBOW PURPLE	U865-1/2PT	AO350-QT	33.00
EAGLE PURPLE	U865-1/2PT	AO361-QT	39.95

FINISHING-PAINT SYSTEMS-POLYTONE

POLYTONE - GALLON

A durable, high gloss, 1 part, air drying flexible paint. Recommended as the standard finish for the Poly-Fiber cover process. Also may be used over suitable primed metal components of fabric covered aircraft. Fabric damage is more easily repaired and refinished to blend the repair when POLYTONE



finish is used. All pigments are non-bleeding or fading. Will not oxidize with age. POLYTONE is manufactured in the correct viscosity for spray gun application in normal conditions. COVERAGE: 1 gallon 200 square feet with one good cross coat. Order by Part Number PT-Enter Color Number-QT=QUART GAL=GALLON Thin with R65-75 reducer. UV BLOCKER: Add by customer, 1/2 pint can blocks 8 quarts or 2 gallons of POLYTONE. Quarts and gallons must be sent UPS ground only.

COLOR	TYPE	PART NUMBER	PRICE
INSIGNIA WHITE	POLYTONE	PT105-G	77.20
JUNEAU WHITE	POLYTONE	PT110-G	77.20
GLACIER WHITE	POLYTONE	PT117-G	77.20
DAYTONA WHITE	POLYTONE	PT120-G	77.20
TUCSON CREAM	POLYTONE	PT125-G	93.15
DIANA CREAM	POLYTONE	PT131-G	93.15
SUN VALLEY IVORY	POLYTONE	PT132-G	93.15
LEMON YELLOW	POLYTONE	PT136-G	93.15
FEDERAL YELLOW	POLYTONE	PT139-G	84.70
ORANGE YELLOW	POLYTONE	PT140-G	93.15
EAGLE YELLOW ORANGE	POLYTONE	PT142A-G	93.15
CUB YELLOW	POLYTONE	PT143-G	93.15
LOCKHAVEN YELLOW	POLYTONE	PT145-G	93.15
J3 OEM YELLOW	POLYTONE	PT146-G	93.15
EVERGLADES GREEN	POLYTONE	PT151-G	93.15
PORTLAND GREEN	POLYTONE	PT156-G	93.15
CUBY SPORT TR GREEN	POLYTONE	PT157-G	93.15
FOREST GREEN	POLYTONE	PT160-G	93.15
LAKELAND BLUE	POLYTONE	PT165-G	93.15
BAHAMA BLUE	POLYTONE	PT170-G	93.15
TRUE BLUE	POLYTONE	PT173-G	93.15
INSIGNIA BLUE	POLYTONE	PT176-G	93.15
EAGLE BLUE	POLYTONE	PT177-G	93.15
CRUISER ORANGE	POLYTONE	PT180-G	93.15
PUMPKIN ORANGE	POLYTONE	PT182-G	93.15
INTERNATIONAL ORANGE	POLYTONE	PT183-G	93.15
EAGLE RED	POLYTONE	PT187-G	93.15
MADRID RED	POLYTONE	PT189-G	93.15
TENNESSEE RED	POLYTONE	PT190-G	93.15
PONTIAC RED	POLYTONE	PT191-G	93.15
SANTA FE RED	POLYTONE	PT195-G	93.15
BOSTON MAROON	POLYTONE	PT196-G	93.15
STINSON MAROON	POLYTONE	PT197-G	93.15
ELSINORE BROWN	POLYTONE	PT203-G	93.15
BERMUDA TAN	POLYTONE	PT205-G	93.15
OLIVE DRAB	POLYTONE	PT208-G	93.15
FEDERAL GREEN	POLYTONE	PT208A-G	93.15
POLAR GREY	POLYTONE	PT210-G	93.15
OAK GREEN	POLYTONE	PT212-G	93.15
AG CAT GREY	POLYTONE	PT213-G	93.15
FEDERAL GREY	POLYTONE	PT213A-G	93.15
DAKOTA BLACK	POLYTONE	PT215-G	93.15
JASPER GREY	POLYTONE	PT219-G	93.15
NEVADA SILVER	POLYTONE	PT220M-G	93.15
RANCHO SILVER	POLYTONE	PT222M-G	93.15
CHAMPION YELLOW	POLYTONE	PT240-G	93.15
AG-CAT YELLOW	POLYTONE	PT242-G	93.15
PIPER TRAINER BLUE	POLYTONE	PT318M-G	93.15
RAINBOW PURPLE	POLYTONE	PT350-G	84.70
EAGLE PURPLE	POLYTONE	PT361-G	93.15

POLYTONE - QUART

A durable, high gloss, 1 part, air drying flexible paint. Recommended as the standard finish for the Poly-Fiber cover process. Also may be used over suitable primed metal components of fabric covered aircraft. Fabric damage is more easily repaired and refinished to blend the repair when POLYTONE



finish is used. All pigments are non-bleeding or fading. Will not oxidize with age. POLYTONE is manufactured in the correct viscosity for spray gun application in normal conditions. COVERAGE: 1 gallon 200 square feet with one good cross coat. Order by Part Number PT-Enter Color Number-QT=QUART GAL=GALLON Thin with R65-75 reducer. UV BLOCKER: Add by customer, 1/2 pint can blocks 8 quarts or 2 gallons of POLYTONE. Gallons require hazardous material fees. Quarts and gallons must be sent UPS ground only.

COLOR	TYPE	PART NUMBER	PRICE
INSIGNIA WHITE	POLYTONE	PT105-QT	21.30
JUNEAU WHITE	POLYTONE	PT110-QT	21.30
GLACIER WHITE	POLYTONE	PT117-QT	21.30
DAYTONA WHITE	POLYTONE	PT120-QT	21.30
TUCSON CREAM	POLYTONE	PT125-QT	26.60
DIANA CREAM	POLYTONE	PT131-QT	26.60
SUN VALLEY IVORY	POLYTONE	PT132-QT	26.60
LEMON YELLOW	POLYTONE	PT136-QT	26.60
FEDERAL YELLOW	POLYTONE	PT139-QT	26.60
ORANGE YELLOW	POLYTONE	PT140-QT	26.60
EAGLE YELLOW ORANGE	POLYTONE	PT142A-QT	26.60
CUB YELLOW	POLYTONE	PT143-QT	26.60
LOCKHAVEN YELLOW	POLYTONE	PT145-QT	26.60
J3 OEM YELLOW	POLYTONE	PT146-QT	26.60
EVERGLADES GREEN	POLYTONE	PT151-QT	26.60
PORTLAND GREEN	POLYTONE	PT156-QT	26.60
CUBY SPORT TR GREEN	POLYTONE	PT157-QT	26.60
FOREST GREEN	POLYTONE	PT160-QT	26.60
LAKELAND BLUE	POLYTONE	PT165-QT	26.60
BAHAMA BLUE	POLYTONE	PT170-QT	26.60
TRUE BLUE	POLYTONE	PT173-QT	26.60
INSIGNIA BLUE	POLYTONE	PT176-QT	26.60
EAGLE BLUE	POLYTONE	PT177-QT	26.20
CRUISER ORANGE	POLYTONE	PT180-QT	26.60
PUMPKIN ORANGE	POLYTONE	PT182-QT	26.60
INTERNATIONAL ORANGE	POLYTONE	PT183-QT	26.60
EAGLE RED	POLYTONE	PT187-QT	26.60
MADRID RED	POLYTONE	PT189-QT	26.60
TENNESSEE RED	POLYTONE	PT190-QT	26.60
PONTIAC RED	POLYTONE	PT191-QT	26.60
SANTA FE RED	POLYTONE	PT195-QT	26.60
BOSTON MAROON	POLYTONE	PT196-QT	26.60
STINSON MAROON	POLYTONE	PT197-QT	26.60
ELSINORE BROWN	POLYTONE	PT203-QT	26.60
BERMUDA TAN	POLYTONE	PT205-QT	26.60
HICKORY BROWN	POLYTONE	PT207-QT	24.20
OLIVE DRAB	POLYTONE	PT208-QT	26.60
POLAR GREY	POLYTONE	PT210-QT	26.60
OAK GREEN	POLYTONE	PT212-QT	26.60
AG CAT GREY	POLYTONE	PT213-QT	26.60
FEDERAL GREY	POLYTONE	PT213A-QT	26.60
DAKOTA BLACK	POLYTONE	PT215-QT	26.60
JASPER GREY	POLYTONE	PT219-QT	26.60
NEVADA SILVER	POLYTONE	PT220M-QT	26.60
RANCHO SILVER	POLYTONE	PT222M-QT	26.60
CHAMPION YELLOW	POLYTONE	PT240-QT	26.60
AG-CAT YELLOW	POLYTONE	PT242-QT	26.60
RENO GOLD	POLYTONE	PT301M-QT	26.60
PIPER TRAINER BLUE	POLYTONE	PT318M-QT	26.60
RAINBOW PURPLE	POLYTONE	PT350-QT	24.20
EAGLE PURPLE	POLYTONE	PT361-QT	26.60

FINISHING - PAINT SYSTEMS

POLY TAK FABRIC CEMENT

A very high strength cement especially for Dacron fabric. FAA approved to attach fabric to the airframe regardless of the aircraft red line. (VnE). No machine sewn or hand sewn seams are required when using Poly-Tak. Provides twice the strength of conventional nitrocellulose fabric cement in shear test. Also excellent for cementing cotton, linen and Fiberglass fabric. Will adhere to most surfaces such as aluminum, steel, Fiberglass laminates, magnesium, glass and wool. Use MEK when necessary to reduce viscosity due to evaporation from an open container. Refer to Stits Poly-Fiber procedure manual #1 for approved cement seam procedure. Packaged in pint, quart, and gallon containers.



HAZARD

DESCRIPTION	PART NUMBER	PRICE EACH
1 Pint	PLY-TK-PT	13.50
1 Quart	PLY-TK-QT	25.70
1 Gallon	PLY-TK-GAL	89.90

POLY BRUSH

A tinted, 1 part air drying resin used for the first 2 or 3 coats to penetrate and seal the fabric weave and assure good adhesion. Also used to attach the finishing tapes and reinforcing patches. Apply with a brush as supplied or may be thinned 25% with Poly-Dope reducer and applied with a spray gun to avoid brush marks and cut application. The Poly-Brush formula incorporates materials to provide the noncombustible characteristics from which the Poly-Fiber covering process is well known. Bare Dacron cloth will continue to burn when ignited; however, after 1 coat of Poly-Brush is applied and dried, the flame will be extinguished when the ignition source is removed. Packaged in qt., gal., and 5 gal. containers.



HAZARD

DESCRIPTION	PART NUMBER	PRICE EACH
1 Quart	PLY-BRSH-QT	25.00
1 Gallon	PLY-BRSH-GAL	77.00
1-5 Gallon	PLY-BRSH-5GAL	375.00

Untinted available:

Untinted Quart	PLY-BRSH-QT/UNT	\$76.00
Untinted Gallon	PLY-BRSH-GAL/UNT	76.00

POLY SPRAY

A high solids aluminum pigmented, 1 part, air drying resin used after the Poly-Brush preliminary coating to protect the fabric from ultraviolet light and quickly fill the fabric wave in preparation for a smooth finish. Poly-Spray is applied with a spray gun with no further thinning needed under normal conditions. Packaged in qt., gal., and 5 gal. containers. One gallon POLY-SPRAY will cover approximately 200 square feet with one good cross coat.



HAZARD

DESCRIPTION	PART NUMBER	PRICE EACH
1 Quart	PLY-SPRY-QT	23.00
1 Gallon	PLY-SPRY-GAL	75.00
1-5 Gallon	PLY-SPRY-5GAL	365.00

R65-75 REDUCER POLY DOPE

A blend of solvents used for viscosity and drying control of Poly-Brush, Poly-Spray, Poly-Tone. Blend #R-65-75 is recommended as the standard reducer in normal weather, 65° to 75°F.

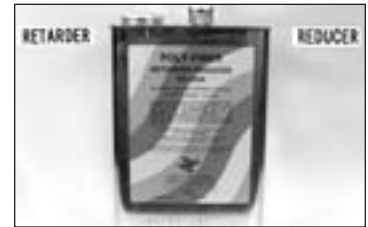


HAZARD

DESCRIPTION	PART NUMBER	PRICE EACH
1 Quart	R65-75-QT	14.50
1 Gallon	R65-75-GAL	45.55
1-5 Gallon	R65-75-5GAL	200.60

8500 RETARDER REDUCER POLY DOPE

Slower drying time reducer is recommended for temperatures above 85°F. and warm humid weather. Packaged in qt., gal., and 5 gal. containers.



HAZARD

DESCRIPTION	PART NUMBER	PRICE EACH
1 Quart	RR8500-QT	14.40
1 Gallon	RR8500-GAL	44.95
1-5 Gallon	RR8500-5GAL	212.85

RETARDER POLY FLOW

A very rich, slow drying solvent blend to be added as needed to prevent blushing and improve flow-out and gloss under conditions of high humidity and/or high temperatures (recommended 1 to 4 liquid oz. per gal.).



HAZARD

DESCRIPTION	PART NUMBER	PRICE EACH
1 Quart	BR-8600-QT	11.10
1 Gallon	BR-8600-GAL	33.85

FINISHING - PAINT SYSTEMS

REJUVENATOR POLY DOPE

Refinishing preparation for STITS poly dope coatings. Rejuvenates by penetration of the slow solvents which carry the new plasticizers into the old coating film.



HAZARD

DESCRIPTION	PART NUMBER	PRICE EACH
1 Quart	RJ-1200-QT	23.30
1 Gallon	RJ-1200-GAL	74.00

URETHANE VARNISH

Clear, high gloss, exterior and interior, the most durable varnish available. A tough, light fast, non-chalking, weather chemical and solvent resistant two-part urethane varnish especially for aircraft and marine wood surfaces which will be exposed to severe environmental conditions. Catalyst must be ordered separately. Mix Ratio: 1 part catalyst to 2 parts base. Coverage: 1 gallon catalyzed base, reduced 25% will cover apx. 600 sf - one coat.



HAZARD

DESCRIPTION	PART NUMBER	PRICE EACH
1 Quart	UV-550-QT	49.25
1 Gallon	UV-550-GAL	169.90
CATALYST:		
1/2 pint	U865-1/2PT	19.25
Quart	U865-QT	49.99

CLEAR AERO ENAMEL

A tough high gloss two part clear polyurethane enamel formulated for metal and fabric covered aircraft surfaces and marine surfaces subjected to flexing and bending loads in service. Provides excellent solvent, chemical abrasion and weather resistance. Cans are filled 3/4 quart and 3/4 gallon. Mix Ratio: 1/2 pt to quart, 1 quart to gallon. Coverage: 225 sf per catalyzed gallon. Drop ship.



HAZARD

DESCRIPTION	PART NUMBER	PRICE EACH
1 Quart	AO-100-QT	38.70
1 Gallon	AO-100-GAL	131.30
CATALYST:		
1/2 Pint	U865-1/2PT	19.25
1 Quart	U865-QT	49.99

REDUCER RETARDER URETHANE

Reducer - special blend for good flow in warm weather to avoid orange peel finish. Retarder - blend of solvents used to retard the surface drying time.



HAZARD

DESCRIPTION	PART NUMBER	PRICE EACH
Reducer - Quart	UE820-QT	17.95
Reducer - Gallon	UE820-GAL	58.00
Retarder - Quart	UR826-QT	18.55
Retarder - Gallon	UR826-GAL	64.00

REDUCER URETHANE

Solvent blend used in Aerothane, Alumathane, and UV-550 varnish. Used in aerothane and alumathane for good flow in warm weather to avoid orange peel finish.

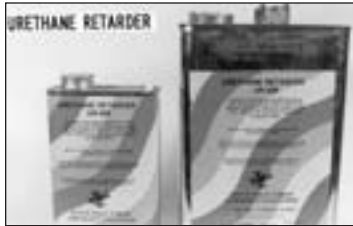


HAZARD

DESCRIPTION	PART NUMBER	PRICE EACH
1 Quart	UE820-QT	17.95
1 Gallon	UE820-GAL	58.00

URETHANE RETARDER

Blend of solvents used in Aerothane, Alumathane, and UV-550 varnish to retard the surface drying time. Use as directed on container.



HAZARD

DESCRIPTION	PART NUMBER	PRICE EACH
1 Quart	UR826-QT	18.55
1 Gallon	UR826-GAL	64.00

EPOXY SPAR VARNISH

Clear gloss, exterior and interior. A polyamide cured epoxy wood varnish providing good chemical and solvent resistance. Weather durability will be equal or superior to any one component varnish. May be used over any one component varnish primer or finish to provide solvent and chemical resistance. Mix Ratio: 1 part catalyst, 2 parts base. Catalyst must be ordered separately.



HAZARD

DESCRIPTION	PART NUMBER	PRICE EACH
1 Quart	EV400-QT	37.60
1 Gallon	EV400-GAL	129.55
CATALYST:		
1 Pint	EV410-PT	16.85
1 Quart	EV410-QT	27.55

EPOXY REDUCER

A blend of solvents for use in EP420 primer and EV400 varnish according to directions on base. Shelf life is infinite in sealed container. Not affected by freezing.



HAZARD

DESCRIPTION	PART NUMBER	PRICE EACH
1 Quart	E500-QT	11.90
1 Gallon	E500-GAL	37.15

FINISHING - PAINT SYSTEMS

EPOXY METAL PRIMER

White or Light green corrosion inhibiting, fast drying, heavy duty chemical & solvent resistant amine cured primer. Application and curing in temperatures down to 35°F. Specify white or green. Mix Ratio: 1 part catalyst, 2 parts base. Catalyst must be ordered separately. 1 gallon primer with catalyst and reducer added, multiplies to 2-1/2 gallons. Available in green or white.



HAZARD

DESCRIPTION	PART NUMBER	PRICE EACH
White -Quart	EP420-QT	43.95
White - Gallon	EP420-G	150.35
Green - Quart	EP420-QT/GR	43.95
Green - Gallon	EP420-GAL/GR	150.35

CATALYST:

1 Pint	EP430-PT	18.75
1 Quart	EP430-QT	31.80

EPOXY ACCELERATOR & RETARDER

For use with EP420 primer and EV400 varnish, according to directions on label.

ACCELERATOR: Accelerated cross linking time, not solvent evaporation time.

RETARDER: Extends drying time.



HAZARD

DESCRIPTION	PART NUMBER	PRICE EACH
Accelerator: 1/2 Pint	EX501-1/2PT	9.00
Retarder: 1 Quart	E-502	11.05

METL-SOL METAL SURFACE CLEANER

A strong solvent blend formulated to remove oil, silicone, wax and other contaminants from all metal surfaces BEFORE priming. Not recommended for painted surfaces.



HAZARD

DESCRIPTION	PART NUMBER	PRICE EACH
1 Quart	C2200-QT	16.45
1 Gallon	C2200-GAL	52.80

PAINT CLEANING SOLVENT

Mild solvent used to remove oil, silicone, wax and other contaminants from painted surfaces without damaging coating. Also used to remove tape gum from painted surfaces and acrylic windshield materials without damage. Many other uses when a mild effective solvent surface cleaner is required, or spot cleaner to remove oil stains from carpet and upholstery. Complete instructions on label.



DESCRIPTION	PART NUMBER	PRICE EACH
Quart	C2210-QT	8.55
Gallon	C2210-GAL	21.90

ALKALINE DETERGENT CLEANER

Concentrated, dilute as needed up to 32 parts water. Recommended as an alkaline metal surface cleaner to remove all oil, grease and silicone in preparation for etching. A very effective vinyl upholstery and interior cabin or car cleaner. Dilute 1 cup to 1 gallon or stronger for engine and cowl spray wash. Apply with sponge, brush or spray. Also excellent extra strength household cleaner. Use on sinks, walls, cabinets, floors, furniture, etc. Easily removes all wax, oil, grease, crayon and pencil marks, dirt and kitchen stains. Use as a clothing pre-wash for stubborn soil spots, or add a cup to the washing machine when real cleaning power is needed. X-Off 310 is not harsh to hands and has a pleasant lemon fragrance.



DESCRIPTION	PART NUMBER	PRICE EACH
1 Quart	XOFF-310-QT	10.25
1 Gallon	XOFF-310-GAL	27.90

PHOSPHORIC ACID ETCH & BRIGHTENER

Aluma-dyne an effective all purpose brush on, wash off cleaner, brightener and paint preparation for all aluminum surfaces. Will clean and remove light oil, natural oxides, weathering stains and light corrosion while etching to provide a firm primer bond. Restores new aluminum appearance. Also recommended to clean steel surfaces before priming. Concentrated: dilute before using.



HAZARD

DESCRIPTION	PART NUMBER	PRICE EACH
1 Quart	E2310-QT	15.85
1 Gallon	E2310-GAL	48.80

BRIGHTENING & ETCHING CREAM

WILL NOT DRAIN FROM VERTICAL OR INVERTED SURFACES, alternate to E2310. Aluma-dyne all purpose brush on, wash off cream cleaner, brightener and paint preparation for all aluminum surfaces. Will clean and remove light oil, natural oxides, weathering stains and light corrosion while etching to provide a firm primer bond. Restores new aluminum appearance. Nonflammable.



HAZARD

DESCRIPTION	PART NUMBER	PRICE EACH
1 Quart	E2311-QT	15.50
1 Gallon	E2311-GAL	50.60

FINISHING - PAINT SYSTEMS

CONVERSION COATING

Aluma-dyne brush on chromic acid treatment to improve corrosion protection on all aluminum surfaces and improve primer adhesion, E2300 chemically accelerates the formation of the natural passive oxide film on aluminum surfaces to resist galvanic corrosion by blocking any electrochemical cell. Does not discolor or change the surface appearance. Not harmful if trapped in fraying surfaces and is nonflammable.



DESCRIPTION	PART NUMBER	PRICE EACH
1 Quart	E2300-QT	8.35

MAGNESIUM CONVERSION COATING

Brush on wash off, chromic acid treatment for magnesium alloy surfaces. Magna-dyne develops a passive oxide film on magnesium surfaces to prevent galvanic corrosion by blocking any electrochemical cell. Recommended as a tough over all conversion coating treatment after a paint stripping operation. Not harmful if trapped in faying surfaces. Nonflammable, dilute before using.



DESCRIPTION	PART NUMBER	PRICE EACH
1 Quart	E2390-QT	6.50

FLATTENER

MIX RATIOS:
POLYTONE and AEROTHANE
To flatten Aerothane to the gloss of Polytone (Semi-gloss): 6 fl oz per quart of paint (1 pint will flatten over 2 quarts) 24 fl oz per gallon of paint (1 quart will flatten over 1 gallon or over 4 quarts) To flatten either Aerothane or Polytone to full military flat: 14 fl oz per quart of paint (1 pint flattens over 1 quart) 42 fl oz per gallon of paint (1 pint and 1 quart flattens 1 gallon) Pint = 16 fl oz., Quart = 32 fl oz., Gallon = 64 fl oz.



HAZARD

DESCRIPTION	PART NUMBER	PRICE EA
Flattener - Pint	FL-PT	19.00
Flattener - Quart	FL-QT	36.00

POLYTONE - UV BLOCK

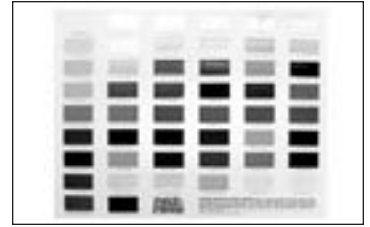
Added by customer, 1/2 pint can blocks 8 quarts or 2 gallons of Polytone. Ship via UPS ground only.



DESCRIPTION	PART NUMBER	PRICE EA
1/2 PINT	UV-1/2PT	22.00

COLOR CHART POLYFIBER

PolyFiber color chart Number 50-B illustrates color samples for Polytone and Aerothane.



DESCRIPTION	PART NUMBER	PRICE EACH
POLY-FIBER COLOR CHART	POLY-CHART	\$0.00

MANUAL - HOW TO COVER AN AIRCRAFT

Comprehensive manual includes explanations and charts illustrating covering an aircraft. Easy to understand. Introduction brochure explains Poly Fiber process.



DESCRIPTION	PART NUMBER	PRICE EACH
135 page Manual	11-PFMANUAL	12.99

PRACTICE & PATCH REPAIR KIT-POLY FIBER

Kit consists of a reusable wood frame, a yard of P-103 fabric, tape, one 1/2 pint each: MEK, R65-65, and Poly-Tak, one pint each: PolyBrush, Poly-Spray, sandpaper, inspection plate 11-35, brushes, needle, thermometer the PF-Intro booklet and the instructions are also summarized in a three page leaflet making fast work of the steps in the process.



HAZARD

DESCRIPTION	PART NUMBER	PRICE EACH
Practice kit	PFK-001	55.00

FINISHING - PAINT SYSTEMS

STYLE P-99

xtra heavy duty fabric recommended for the most severe operating conditions and very high wing loading aircraft. Its large filament size and high strength provides excellent rock penetration and tear resistance, characteristics required for trouble free bush and agricultural operations. Also suitable for all aircraft where a very tough, durable, low elongation, high tension fabric is required and weight is not critical. Thread count 65x58/in, weight 3.4 oz., Breaking strength, over 125 lbs/in. Bursting strength, 304 PSI, Tear Strength Warp 30.1 lbs, Fill 33.0 lbs.



DESCRIPTION	PART NUMBER	PRICE P/YARD
3.4 oz., 70" width	P99-70	12.10

STYLE P-103

Considered standard fabric. Recommended for normal service and is widely used on all types of aircraft regardless of wing loading or horsepower. Thread count: 70 x 61/in., Weight 2.7 oz. sq. yd. Breaking strength: over 102 lbs/in, Elongation at 70 lbs. in/ Warp 8.5%, Fill 9.6%, Bursting strength: 201 PSI, Tear strength: Warp 324 lbs, Fill 22.9 lbs. Tension 54.2 oz/in.



DESCRIPTION	PART NUMBER	PRICE P/YARD
2.7 oz, 71" width	P103-71	9.95

UNCERTIFIED STYLE P-106

Lightweight smooth fabric recommended for covering light aircraft with a wing load under 9 lbs. p/sqft and a Vne speed less than 160 mph, which are eligible to be covered with fabric meeting. Thread count 98 x 98/in, Weight 1.7 oz, Breaking strength over 67 lbs/in, Elongation at 57 lbs.in, Warp 9.3%, Fill 10.9%, Bursting strength: 161 psi, Tear strength: Warp 6.5 lbs, Fill 7.7 lbs. "UNCERTIFIED"



DESCRIPTION	PART NUMBER	PRICE P/YARD
1.7 oz. 62" wide uncertified fabric	P106-62	8.25

POLYESTER PADDING

Nonwoven, 45" wide, 3 oz per yard. Used under fabric on wing leading edge and turtle deck to smooth rough surfaces. .125 thick, compresses to .020 under load.



DESCRIPTION	PART NUMBER	PRICE P/YARD
3 oz/ 45" wide padding	POLY-PAD	7.50

PINKED FINISHING TAPES - POLYESTER

Pinked edge tape in various fabric weight and lengths. Linear cut. Sold by the roll.



WIDTH	YD	WEIGHT	PART NUMBER	PRICE EACH
1" Pinked linear	25	2.7	1x25-P103	13.50
1-1/2" Pinked linear	25	2.7	1-1/2x25-P103	16.00
2" Pinked linear	50	2.7	2x50-P103	35.00
3" Pinked linear	25	2.7	3x25-P103	27.90
4" Pinked linear	25	2.7	4x25-P103	32.50
6" Pinked linear	25	2.7	6x25-P103	44.50
1" Pinked linear	25	1.7	1x25-P106	16.55
1-1/2" Pinked linear	25	1.7	1-1/2x25-P106	17.85
2" Pinked linear	50	1.7	2x50-P106	33.45
3" Pinked linear	25	1.7	3x25-P106	27.50
4" Pinked linear	25	1.7	4x25-P106	29.25
6" Pinked linear	25	1.7	6x25-P106	44.50

BIAS CUT FINISHING TAPE - POLYESTER

Pinked edge - bias cut (45° to edge). Especially useful for trimming compound components such as round wing tips and tail surfaces. Bias tape will stretch to conform to the required contour without the usual wrinkles. Stretching reduces the width, and 3" should be used to finish areas normally covered with standard 2". Bias tapes are spliced with a sewn seam at 50" intervals.



WIDTH	YD	WEIGHT	PART NUMBER	PRICE EACH
2" Bias cut	25	2.4	2x25-P110BS	44.50
3" Bias cut	25	2.4	3x25-P110BS	41.95
4" Bias cut	25	2.4	4x25-P110BS	52.15

FINISHING-PAINT SYSTEMS-RANDOLPH

BUTYRATE ALL PURPOSE COLORS - GALLON



Non tautening color butyrate dope is to be used on fabric only. All purpose Butyrate dope should be sprayed, never brushed. Thin with equal parts of butyrate thinner 9703. Use color number and letters APB to designate part number. Example: B-3534APB-G. Quarts and gallons must be sent UPS ground only.

COLOR	PART NUMBER	PRICE
JUNEAU WHITE	B-4243APB-G	70.20
RENO GOLD	B-9916APB-G	84.70
OCALA ORANGE	C-2065APB-G	84.70
AG CAT YELLOW	D-9270APB-G	84.70
AERONCA 7AC YELLOW	E-6427APB-G	84.50
AERONCA 7AC ORANGE	E-6428APB-G	84.70
FEDERAL GREEN	F-2406APB-G	84.70
MONTEGO GREEN	F-5830APB-G	84.70
CUB J3 YELLOW	F-6285APB-G	84.70
AG CAT GRAY	F-7790APB-G	84.70
BLACK	H-6117APB-G	84.70
SANTA FE RED	H-9150APB-G	84.70
VESTAL WHITE	K-7641APB-G	70.20
AN ORANGE YELLOW	M-9501APB-G	84.70
LEMON YELLOW	M-9512APB-G	84.70
LOCKHAVEN YELLOW	M-9521APB-G	84.70
VERMILION RED	M-9530APB-G	84.70
FEDERAL YELLOW	N-3353APB-G	84.70
CESSNA TIGER ORANGE	P-8600APB-G	84.70
NEW INSIGNIA WHITE	Q-1050APB-G	70.20
OLIVE DRAB FLAT	R-4869APB-G	84.70
NEUTRAL GREY	R-4870APB-G	84.70
PLATINUM GRAY	R-8174APB-G	84.70
SANDALWOOD	R-8175APB-G	84.70
LAKELAND BLUE	W-3554APB-G	84.70
PONTIAC RED	W-3665APB-G	84.70
TAMPA GREEN	W-8427APB-G	84.70
NEWPORT BLUE METALLI	W-8430APB-G	84.70
TROPIC WHITE	W-9170APB-G	70.20
AN TRUE BLUE	W-9506APB-G	84.70
TUCSON CREAM	X-5260APB-G	84.70
BOSTON MAROON	X-5680APB-G	84.70
MIAMI BLUE	X-5700APB-G	84.70
STINSON MAROON	X-5749APB-G	84.70
DALLAS YELLOW	Y-5783APB-G	84.70
POLAR GRAY	Y-6100APB-G	84.70
FOREST GREEN	Y-6350APB-G	84.70
HICKORY BROWN	Y-9775APB-G	84.70
SUN VALLEY IVORY	Z-7245APB-G	84.70
MADRID RED	B-3534APB-G	84.70
COLORADO RED	B-9163APB-G	84.70
BAHAMA BLUE	H-9170APB-G	84.70
DAYTONA WHITE	J-9545APB-G	70.20
CADILLAC RED	J-9555APB-G	84.70
INSIGNIA BLUE	M-9502APB-G	84.70
METALLIC SILVER	M-9514APB-G	84.70
DIANA CREAM	M-9518APB-G	84.70
TENNESSEE RED	M-9522APB-G	84.70
CRUISER ORANGE	M-9526APB-G	84.70
INSIGNIA WHITE	Q-1916APB-G	70.20

BUTYRATE ALL PURPOSE COLORS - QUART



Non tautening color butyrate dope is to be used on fabric only. All purpose Butyrate dope should be sprayed, never brushed. Thin with equal parts of butyrate thinner 9703. Use color number and letters APB to designate part number. Example: B-3534APB-G. Gallons require hazardous material fees. Quarts and gallons must be sent UPS ground only.

COLOR	PART NUMBER	PRICE
MADRID RED	B-3534APB-QT	24.20
JUNEAU WHITE	B-4243APB-QT	19.35
COLORADO RED	B-9163APB-QT	24.20
RENO GOLD	B-9916APB-QT	24.20
OCALA ORANGE	C-2065APB-QT	24.20
AERONCA 7AC YELLOW	E-6427APB-QT	24.20
AERONCA 7AC ORANGE	E-6428APB-QT	24.20
FEDERAL GREEN	F-2406APB-QT	24.20
AG CAT GRAY	F-7790APB-QT	24.20
SANTA FE RED	H-9150APB-QT	24.20
BAHAMA BLUE	H-9170APB-QT	24.20
DAYTONA WHITE	J-9545APB-QT	19.35
VESTAL WHITE	K-7641APB-QT	19.35
AN ORANGE YELLOW	M-9501APB-QT	24.20
LEMON YELLOW	M-9512APB-QT	24.20
LOCKHAVEN YELLOW	M-9521APB-QT	24.20
FEDERAL YELLOW	N-3353APB-QT	24.20
NEW INSIGNIA WHITE	Q-1050APB-QT	19.35
OLIVE DRAB FLAT	R-4869APB-QT	24.20
NEUTRAL GRAY	R-4870APB-QT	24.20
PLATINUM GRAY	R-8174APB-QT	24.20
SANDALWOOD	R-8175APB-QT	24.20
LAKELAND BLUE	W-3554APB-QT	24.20
PONTIAC RED	W-3665APB-QT	24.20
TAMPA GREEN	W-8427APB-QT	24.20
NEWPORT BLUE METALLIC	W-8430APB-QT	24.20
TROPIC WHITE	W-9170APB-QT	19.35
AN TRUE BLUE	W-9506APB-QT	24.20
TUCSON CREAM	X-5260APB-QT	24.20
BOSTON MAROON	X-5680APB-QT	24.20
MIAMI BLUE	X-5700APB-QT	24.20
STINSON MAROON	X-5749APB-QT	24.20
DALLAS YELLOW	Y-5783APB-QT	24.20
POLAR GRAY	Y-6100APB-QT	24.20
FOREST GREEN	Y-6350APB-QT	24.20
HICKORY BROWN	Y-9775APB-QT	24.20
SUN VALLEY IVORY	Z-7245APB-QT	24.20
AG CAT YELLOW	D-9270APB-QT	24.20
MONTEGO GREEN	F-5830APB-QT	24.20
CUB J3 YELLOW	F-6285APB-QT	24.20
BLACK	H-6117APB-QT	24.20
CADILLAC RED	J-9555APB-QT	24.20
INSIGNIA BLUE	M-9502APB-QT	24.20
METALLIC SILVER	M-9514APB-QT	24.20
DIANA CREAM	M-9518APB-QT	24.20
TENNESSEE RED	M-9522APB-QT	24.20
CRUISER ORANGE	M-9526APB-QT	24.20
VERMILION RED	M-9530APB-QT	24.20
CESSNA TIGER ORANGE	P-8600APB-QT	24.20
INSIGNIA WHITE	Q-1916APB-QT	19.35

FINISHING-PAINT SYSTEMS-RANDOLPH

ENAMEL ALL PURPOSE COLORS - GALLON



For use over primed treated substrates such as alclad aluminum, steel, fiberglass, wood and in some applications as a top coat on fabric. These enamels have typical enamel characteristics such as a longer drying time between coat and masking.

They dry dust free in under 1 hour but should not be masked for trim in under 48 hours. Enamels show full luster, good color retention and excellent flight proven durability. Use color number and letter E to designate part number. Example: P-6600E-QT.Thin with 257 enamel reducer. Quarts and gallons must be sent UPS ground only.

ENAMEL ALL PURPOSE COLORS - QUART



For use over primed treated substrates such as alclad aluminum, steel, fiberglass, wood and in some applications as a top coat on fabric. These enamels have typical enamel characteristics such as a longer drying time between coat and masking.

They dry dust free in under 1 hour but should not be masked for trim in under 48 hours. Enamels show full luster, good color retention and excellent flight proven durability. Use color number and letter E to designate part number. Example: P-6600E-QT.Thin with 257 enamel reducer. Gallons require hazardous material fees. Quarts and gallons must be sent UPS ground only.

COLOR	PART NUMBER	PRICE
MADRID RED	B-3534E-G	93.15
COLORADO RED	B-9163E-G	93.15
RENO GOLD	B-9916E-G	93.15
OCALA ORANGE	C-2065E-G	93.15
AG CAT YELLOW	D-9270E-G	93.15
AERONCA 7AC YELLOW	E-6427E-G	93.15
AERONCA 7AC ORANGE	E-6428E-G	93.15
FEDERAL GREEN	F-2406E-G	93.15
MONTEGO GREEN	F-5830E-G	93.15
CUB J3 YELLOW	F-6285E-G	93.15
AG CAT GRAY	F-7790E-G	93.15
BLACK	H-6117E-G	93.15
SANTA FE RED	H-9150E-G	93.15
BAHAMA BLUE	H-9170E-G	93.15
VESTAL WHITE	K-7641E-G	77.20
INSIGNIA BLUE	M-9502E-G	93.15
METALLIC SILVER	M-9514E-G	93.15
DIANA CREAM	M-9518E-G	93.15
LOCKHAVEN YELLOW	M-9521E-G	93.15
TENNESSEE RED	M-9522E-G	93.15
VERMILION RED	M-9530E-G	93.15
FEDERAL YELLOW	N-3353E-G	93.15
CESSNA TIGER ORANGE	P-8600E-G	93.15
NEW INSIGNIA WHITE	Q-1050E-G	77.20
OLIVE DRAB	R-4869E-G	93.15
NEUTRAL GRAY	R-4870E-G	93.15
PLATINUM ENAME	R-8174E-G	93.15
SANDALWOOD	R-8175E-G	93.15
LAKELAND BLUE	W-3554E-G	93.15
PONTIAC RED	W-3665E-G	93.15
TAMPA GREEN	W-8427E-G	93.15
NEWPORT BLUE METALLIC	W-8430E-G	93.15
TROPIC WHITE	W-9170E-G	77.20
AN TRUE BLUE	W-9506E-G	93.15
TUCSON CREAM	X-5260E-G	93.15
BOSTON MAROON	X-5680E-G	93.15
MIAMI BLUE	X-5700E-G	93.15
STINSON MAROON	X-5749E-G	93.15
DALLAS YELLOW	Y-5783E-G	93.15
POLAR GRAY	Y-6100E-G	93.15
FOREST GREEN	Y-6350E-G	93.15
HICKORY BROWN	Y-9775E-G	93.15
SUN VALLEY IVORY	Z-7245E-G	93.15
JUNEAU WHITE	B-4243E-G	77.20
CADILLAC RED	J-9555E-G	93.15
DAYTONA WHITE	J-9545E-G	77.20
AN ORANGE YELLOW	M-9501E-G	93.15
LEMON YELLOW	M-9512E-G	93.15
CRUISER ORANGE	M-9526E-G	93.15
INSIGNIA WHITE	Q-1916E-G	77.20

COLOR	PART NUMBER	PRICE
RENO GOLD	B-9916E-QT	26.60
AG CAT YELLOW	D-9270E-QT	26.60
AERONCA 7AC YELLOW	E-6427E-QT	26.60
AERONCA 7AC ORANGE	E-6428E-QT	26.60
FEDERAL GREEN	F-2406E-QT	26.60
CUB J3 YELLOW	F-6285E-QT	26.60
AG CAT GRAY	F-7790E-QT	26.60
LYCOMING GREY	G5436E-QT	19.15
DAYTONA WHITE	J-9545E-QT	21.30
VESTAL WHITE	K-7641E-QT	21.30
LEMON YELLOW	M-9512E-QT	26.60
DIANA CREAM	M-9518E-QT	26.60
VERMILION RED	M-9530E-QT	26.60
FEDERAL YELLOW	N-3353E-QT	26.60
CESSNA TIGER ORANGE	P-8600E-QT	26.60
NEW INSIGNIA WHITE	Q-1050E-QT	21.30
INSIGNIA WHITE	Q-1916E-QT	21.30
OLIVE DRAB	R-4869E-QT	26.60
NEUTRAL GRAY	R-4870E-QT	26.60
PLATINUM GRAY	R-8174E-QT	26.60
SANDALWOOD	R-8175E-QT	26.60
LAKELAND BLUE	W-3554E-QT	26.60
PONTIAC RED	W-3665E-QT	26.60
TAMPA GREEN	W-8427E-QT	26.60
NEWPORT BLUE METTALIC	W-8430E-QT	26.60
TROPIC WHITE	W-9170E-QT	21.30
AN TRUE BLUE	W-9506E-QT	26.60
TUCSON CREAM	X-5260E-QT	26.60
BOSTON MAROON	X-5680E-QT	26.60
MIAMIE BLUE	X-5700E-QT	26.60
STINSON MAROON	X-5749E-QT	26.60
DALLAS YELLOW	Y-5783E-QT	26.60
POLAR GRAY	Y-6100E-QT	26.60
FOREST GREEN	Y-6350E-QT	26.60
HICKORY BROWN	Y-9775E-QT	26.60
SUN VALLEY IVORY	Z-7245E-QT	26.60
MADRID RED	B-3534E-QT	26.60
JUNEAU WHITE	B-4243E-QT	21.30
COLORADO RED	B-9163E-QT	26.60
OCALA ORANGE	C-2065E-QT	26.60
MONTEGO GREEN	F-5830E-QT	26.60
BLACK	H-6117E-QT	26.60
SANTA FE RED	H-9150E-QT	26.60
BAHAMA BLUE	H-9170E-QT	26.60
CADILLAC RED	J-9555E-QT	26.60
AN ORANGE YELLOW	M-9501E-QT	26.60
INSIGNIA BLUE	M-9502E-QT	26.60
METALLIC SILVER	M-9514E-QT	26.60
LOCKHAVEN YELLOW	M-9521E-QT	26.60
TENNESSEE RED	M-9522E-QT	26.60
CRUISER ORANGE	M-9526E-QT	26.60

FINISHING-PAINT SYSTEMS-RANDOLPH

HIGH SOLIDS POLYURETHANE - GALLON



New 2nd generation two part Randolph polyurethane combines ease of application with excellent hiding qualities, chemical resistance, flexibility, and durability. Spraying properties are excellent with good leveling, flow out, and absence of texturing or orange peel. CATALYST is ordered separately. Use catalyst part number: AUCAT-PT (pint), -QT (quart) or -GAL (gallon). Mixture ratio: 2 parts color to 1 part catalyst. Reduce with G4200. Pot life: around 6 hours. Full cure: 8 days. Use color number and letter AU to designate part number. UPS ground shipping only.

COLOR	CATALYST	PART NUMBER	PRICE
MADRID RED	AUCAT-QT	B-3534AU-G	200.50
COLORADO RED	AUCAT-QT	B-9163AU-G	200.50
RENO GOLD	AUCAT-QT	B-9916AU-G	200.50
OCALA ORANGE	AUCAT-QT	C-2065AU-G	200.50
AG CAT YELLOW	AUCAT-QT	D-9270AU-GAL	200.50
AERONCA 7AC YELLOW	AUCAT-QT	E-6427AU-G	200.50
AERONCA 7AC ORANGE	AUCAT-QT	E-6428AU-G	200.50
FEDERAL GREEN	AUCAT-QT	F-2406AU-G	200.50
MONTEGO GREEN	AUCAT-QT	F-5830AU-G	200.50
CUB J3 YELLOW	AUCAT-QT	F-6285AU-G	200.50
AG CAT GRAY	AUCAT-QT	F-7790AU-G	200.50
BLACK	AUCAT-QT	H-6117AU-G	200.50
SANTA FE RED	AUCAT-QT	H-9150AU-G	200.50
BAHAMA BLUE	AUCAT-QT	H-9170AU-G	200.50
CADILLAC RED	AUCAT-QT	J-9555AU-G	200.50
VESTAL WHITE	AUCAT-QT	K-7641AU-G	147.45
LEMON YELLOW	AUCAT-QT	M-9512AU-G	200.50
METALLIC SILVER	AUCAT-QT	M-9514AU-G	200.50
DIANA CREAM	AUCAT-QT	M-9518AU-G	200.50
LOCKHAVEN YELLOW	AUCAT-QT	M-9521AU-G	200.50
TENNESSEE RD	AUCAT-QT	M-9522AU-G	200.50
CRUISER ORANGE	AUCAT-QT	M-9526AU-G	200.50
VERMILLION RED	AUCAT-QT	M-9530AU-G	200.50
FEDERAL YELLOW	AUCAT-QT	N-3353AU-G	200.50
CESSNA TIGER ORANGE	AUCAT-QT	P-8600AU-GAL	200.50
NEW INSIGNIA WHITE	AUCAT-QT	Q-1050AU-G	147.45
INSIGNIA WHITE	AUCAT-QT	Q-1916AU-G	147.45
OLIVE DRAB	AUCAT-QT	R-4869AU-G	200.50
NEUTRAL GRAY	AUCAT-QT	R-4870AU-G	200.50
PLATINUM GRAY	AUCAT-QT	R-8174AU-G	200.50
SANDALWOOD	AUCAT-QT	R-8175AU-G	200.50
LAKELAND BLUE	AUCAT-QT	W-3554AU-G	200.50
PONTIAC RED	AUCAT-QT	W-3665AU-G	200.50
METALLIC TAMPA GREEN	AUCAT-QT	W-8427AU-G	200.50
METALLIC NEWPORT BLU	AUCAT-QT	W-8430AU-G	200.50
TROPIC WHITE	AUCAT-QT	W-9170AU-G	147.45
AN TRUE BLUE	AUCAT-QT	W-9506AU-G	200.50
TUCSON CREAM	AUCAT-QT	X-5260AU-G	200.50
BOSTON MAROON	AUCAT-QT	X-5680AU-G	200.50
MIAMI BLUE	AUCAT-QT	X-5700AU-G	200.50
STINSON MAROON	AUCAT-QT	X-5749AU-G	200.50
DALLAS YELLOW	AUCAT-QT	Y-5783AU-G	200.50
POLAR GRAY	AUCAT-QT	Y-6100AU-G	200.50
FOREST GREEN	AUCAT-QT	Y-6350AU-G	200.50
HICKORY BROWN	AUCAT-QT	Y-9775AU-G	200.50
SUN VALLEY IVORY	AUCAT-QT	Z-7245AU-G	200.50
JUNEAU WHITE	AUCAT-QT	B-4243AU-G	147.45
DAYTONA WHITE	AUCAT-QT	J-9545AU-G	147.45
AN ORANGE YELLOW	AUCAT-QT	M-9501AU-G	200.50
INSIGNIA BLUE	AUCAT-QT	M-9502AU-G	200.50

HIGH SOLIDS POLYURETHANE - QUART



New 2nd generation two part Randolph polyurethane combines ease of application with excellent hiding qualities, chemical resistance, flexibility, and durability. Spraying properties are excellent with good leveling, flow out, and absence of texturing or orange peel. CATALYST is ordered separately. Use catalyst part number: AUCAT-PT (pint), -QT (quart) or -GAL (gallon). Mixture ratio: 2 parts color to 1 part catalyst. Reduce with G4200. Pot life: around 6 hours. Full cure: 8 days. Use color number and letter AU to designate part number. Gallons require hazardous material fees. UPS ground shipping only.

COLOR	CATALYST	PART NUMBER	PRICE
MADRID RED	AUCAT-PT	B-3534AU-QT	66.75
JUNEAU WHITE	AUCAT-PT	B-4243AU-QT	48.35
COLORADO RED	AUCAT-PT	B-9163AU-QT	66.75
RENO GOLD	AUCAT-PT	B-9916AU-QT	66.75
OCALA ORANGE	AUCAT-PT	C-2065AU-QT	66.75
AG CAT YELLOW	AUCAT-PT	D-9270AU-QT	66.75
AERONCA 7AC YELLOW	AUCAT-PT	E-6427AU-QT	66.75
AERONCA 7AC ORANGE	AUCAT-PT	E-6428AU-QT	66.75
FEDERAL GREEN	AUCAT-PT	F-2406AU-QT	66.75
MONTEGO GREEN	AUCAT-PT	F-5830AU-QT	66.75
AG CAT GRAY	AUCAT-PT	F-7790AU-QT	66.75
BAHAMA BLUE	AUCAT-PT	H-9170AU-QT	66.75
CADILLAC RED	AUCAT-PT	J-9555AU-QT	66.75
VESTAL WHITE	AUCAT-PT	K-7641AU-QT	48.35
AN ORANGE YELLOW	AUCAT-PT	M-9501AU-QT	66.75
LEMON YELLOW	AUCAT-PT	M-9512AU-QT	66.75
METALLIC SILVER	AUCAT-PT	M-9514AU-QT	66.75
DIANA CREAM	AUCAT-PT	M-9518AU-QT	66.75
LOCKHAVEN YELLOW	AUCAT-PT	M-9521AU-QT	66.75
CRUISER ORANGE	AUCAT-PT	M-9526AU-QT	66.75
VERMILLION RED	AUCAT-PT	M-9530AU-QT	66.75
FEDERAL YELLOW	AUCAT-PT	N-3353AU-QT	66.75
CESSNA TIGER ORANGE	AUCAT-PT	P-8600AU-QT	66.75
NEW INSIGNIA WHITE	AUCAT-PT	Q-1050AU-QT	48.35
INSIGNIA WHITE	AUCAT-PT	Q-1916AU-QT	48.35
OLIVE DRAB	AUCAT-PT	R-4869AU-QT	66.75
NEUTRAL GRAY	AUCAT-PT	R-4870AU-QT	66.75
PLATINUM GRAY	AUCAT-PT	R-8174AU-QT	66.75
SANDALWOOD	AUCAT-PT	R-8175AU-QT	66.75
LAKELAND BLUE	AUCAT-PT	W-3554AU-QT	66.75
PONTIAC RED	AUCAT-PT	W-3665AU-QT	66.75
METALLIC TAMPA GREEN	AUCAT-PT	W-8427AU-QT	66.75
METALLIC NEWPORT BLU	AUCAT-PT	W-8430AU-QT	66.75
TROPIC WHITE	AUCAT-PT	W-9170AU-QT	48.35
AN TRUE BLUE	AUCAT-PT	W-9506AU-QT	66.75
TUCSON CREAM	AUCAT-PT	X-5260AU-QT	66.75
BOSTON MAROON	AUCAT-PT	X-5680AU-QT	66.75
MIAMI BLUE	AUCAT-PT	X-5700AU-QT	66.75
STINSON MAROON	AUCAT-PT	X-5749AU-QT	66.75
DALLAS YELLOW	AUCAT-PT	Y-5783AU-QT	66.75
POLAR GRAY	AUCAT-PT	Y-6100AU-QT	66.75
FOREST GREEN	AUCAT-PT	Y-6350AU-QT	66.75
HICKORY BROWN	AUCAT-PT	Y-9775AU-QT	66.75
SUN VALLEY IVORY	AUCAT-PT	Z-7245AU-QT	66.75
CUB J3 YELLOW	AUCAT-PT	F-6285AU-QT	66.75
BLACK	AUCAT-PT	H-6117AU-QT	66.75
SANTA FE RED	AUCAT-PT	H-9150AU-QT	66.75
DAYTONA WHITE	AUCAT-PT	J-9545AU-QT	48.35
INSIGNIA BLUE	AUCAT-PT	M-9502AU-QT	66.75
TENNESSEE RED	AUCAT-PT	M-9522AU-QT	66.75

FINISHING - PAINT SYSTEMS

RAND-O-PROOF

Designed for the first coat on Dacron polyester fabrics after the fabric has been taunted with heat as required. Can also be used as the first brush coat on linen or cotton, with adequate penetration. Thin with nitrate thinner #286 to produce a wet film on the reverse side of the fabric without causing runs or dripping.



HAZARD

DESCRIPTION	PART NUMBER	PRICE EACH
Quart	G6302-QT	14.10
Gallon	G6302-G	45.90
5-Gallon	G6302-5G	202.95

RAND-O-FILL

Non-taunting material designed for spray build up over either nitrate or butyrate clear dope and provides protection against ultraviolet rays that damage the fibers of the cloth. Thin as needed with butyrate thinner #9703. Used as a fill coat, wet sand after completely dry.



HAZARD

DESCRIPTION	PART NUMBER	PRICE EACH
Quart	G6303-QT	16.05
Gallon	G6303-G	48.30
5-Gallon	G6303-5G	234.15

CLEAR BUTYRATE DOPE

An all purpose clear dope proprietary formulated contains high total solids. Normally considered one of the best dopes for finishing fabric because of its slower curing rate, butyrate dope can be used on cotton or fiberglass fabric over nitrate dope for good taunting and filling. Can also be used over nitrate dope on dacron polyester fabric. First coat should be brushed on cotton fabrics, and thinned with butyrate thinner #9703. Remaining coats of clear #9701 may be spray applied, thinned 50-100%.



HAZARD

DESCRIPTION	PART NUMBER	PRICE EACH
Quart	9701-QT	14.95
Gallon	9701-G	45.00
5 Gallon	9701-5G	199.95

NON-TAUNING BUTYRATE DOPE

This formula has a slight increase in plasticizer and will not continue to taunt excessively. Longer drying time between each coat is required. Also available in nontinted.



HAZARD

DESCRIPTION	PART NUMBER	PRICE EACH
Quart	W8350-QT	15.65
Gallon	W8350-G	45.00
5-Gallon	W8350-5G	210.85
Non-Tinted Quart	A1690-QT	15.50
Non-Tinted Gallon	A1690-G	43.40

BUTYRATE THINNER

For use with butyrate dope formulations, an active blend of solvents used to reduce the viscosity.



HAZARD

DESCRIPTION	PART NUMBER	PRICE EACH
Quart	9703-QT	8.99
Gallon	9703-G	27.75
5-Gallon	9703-5G	121.35

BUTYSOLV REJUVENATOR

Mixture of solvents and plasticizers designed to soften and revitalize butyrate dope finishes.



HAZARD

DESCRIPTION	PART NUMBER	PRICE EACH
Quart	J3000-QT	23.65
Gallon	J3000-G	71.00

CLEAR NITRATE DOPE

TAUNTING

Proprietary formulation containing high solids. Good durability, good fill and fast pull-up. Because of its better encapsulating properties, may be used to advantage for first coat. #280 is manufactured according to Military Spec MIL-D-5533A.



HAZARD

DESCRIPTION	PART NUMBER	PRICE EACH
Quart	210-QT	14.75
Gallon	210-G	40.95
5-Gallon	210-5G	198.65

FINISHING - PAINT SYSTEMS

NON-TAUTENING NITRATE DOPE

Formula has a slight increase in plasticizer and will not continue to tauten excessively. Longer drying between coats is required. Available in tinted or nontinted.



HAZARD

DESCRIPTION	PART NUMBER	PRICE EACH
Quart-tinted	W7868-QT	15.95
Gallon-tinted	W7868-G	45.00
5 Gallon - tinted	W7868-5G	210.00
Untinted - Quart	E4964-QT	13.85
Untinted-Gallon	E4964-GAL	41.40
Untinted-5 Gallon	E4964-5G	200.50

NITRATE THINNER

Thinner for nitrate dope, has very good blush retarding action. 5 gallon containers are also available.



HAZARD

DESCRIPTION	PART NUMBER	PRICE EACH
Quart	286-QT	8.50
Gallon	286-G	26.00
5-Gallon	286-5G	109.40

UNIVERSAL RETARDER

Is a mixture of slow evaporating solvents that may be used with either Butyrate dope, Nitrate dope, or Randacryl. It is recommended when blush occurs in amounts up to 20% of the total thinner requirements. This will slow down the drying time of the final coat allowing the film to level to a good gloss.



HAZARD

DESCRIPTION	PART NUMBER	PRICE EACH
Quart	Y9910-QT	14.85
Gallon	Y9910-G	42.00
5 Gallon	Y9910-5G	198.80

ALUMINUM PASTE

Supersedes the aluminum powder for protection against ultraviolet rays that damage the fibers of the cloth. Mix ratio is one pound of paste to five gallons clear dope before thinning. Used during one of the fill coats, it should be noted that the aluminum dope is not a sanding coat. Available in one pound cans only.



DESCRIPTION	PART NUMBER	PRICE EACH
1-lb. can paste	701	16.70
1-lb can powder	804	49.99

EPIBOND PRIMER

(Dope proof) is a two component primer for metal surfaces. Off-white in color, an excellent base coat under white or light colored combinations. Use with equal parts of mixing liquid #2249, listed below.



HAZARD

DESCRIPTION	PART NUMBER	PRICE EACH
Quart	W2248-QT	39.95
Gallon	W2248-G	136.70

RAND-O-PLATE

Is a component primer for metal, dark green in color, an excellent undercoat for dark range of colors. (Same formulation as Epibond). Use with equal parts mixing liquid #W2249, listed next.



HAZARD

DESCRIPTION	PART NUMBER	PRICE EACH
Quart	B6433-QT	42.00
Gallon	B6433-G	136.70

BUTYRATE THINNER

For use with butyrate dope formulations, an active blend of solvents used to reduce the viscosity.



HAZARD

DESCRIPTION	PART NUMBER	PRICE EACH
Quart	9703-QT	8.99
Gallon	9703-G	27.75
5-Gallon	9703-5G	121.35

REDUCER- ENAMEL 257

Proper solvent for reducing aircraft enamels. This same reducer can be used for engine enamels, wing walk compound, synthetic base surfacer #660 and white dope proof paint #343.



HAZARD

DESCRIPTION	PART NUMBER	PRICE EACH
Quart	257-QT	9.89
Gallon	257-G	27.95

FINISHING - PAINT SYSTEMS

RANTHANE REDUCER

Custom blend of solvents used for the proper reduction of mixed Ranthane to the correct spray viscosity.



HAZARD

ACID PROOF BLACK PAINT

Made according to military specifications TT-L-54. Reducer with thinner #286 use on metal surface adjacent to battery.



HAZARD

DESCRIPTION	PART NUMBER	PRICE EACH
Quart	G4200-QT	9.90
Gallon	G4200-G	31.00

DESCRIPTION	PART NUMBER	PRICE EACH
Quart	344-QT	17.25
Gallon	344-G	41.70

ACCELERATOR RANTHANE

Created to speed drying time of Ranthane. Add accelerator after it has been mixed with catalyst. Shortens pot life of Ranthane. Normal dry time for Ranthane under 8 hours with accelerator 6 to 6-1/2 hours. The amount can be up to 4 ounces per gallon. Use as little as practical because it will shorten the pot life of the Ranthane. Under high temperature conditions reduce the amount used.



HAZARD

BLACK WRINKLE ENAMEL

11 oz can features unique fan spray valve to produce professional result. Black wrinkle paint gives a wrinkle non-glare surface for use on instrument panels. Aerosol cans can be shipped ground type freight only - no Air.



DESCRIPTION	PART NUMBER	PRICE EACH
Quart accelerator	D7201-QT	39.00

DESCRIPTION	PART NUMBER	PRICE EACH
11 oz can	10-101	10.40

FLOAT BOTTOM COMPOUND

Bitumastic material may be sprayed on the bottom of aluminum floats. Protects the float from marine growth. Also excellent for battery compartments. Reduce with #257 enamel reducer.



HAZARD

FAST DRY ENGINE ENAMEL

For use in painting crank cases and cylinders of aircraft engines after major overhaul. Spray cans contain 13.5 to 16 oz. per can. Aerosols may NOT be sent via Air: Red, Blue etc.



HAZARD

DESCRIPTION	PART NUMBER	PRICE EACH
Quart	345-QT	15.95
Reducer-Quart	257-QT	9.89

COLOR	CONTAINER	PART NUMBER	PRICE EACH
Black	Quart	303-QT	17.40
Cont. Gold	Quart	D5973E-QT	19.15
Lyc. Grey	Quart	G5436E-QT	19.15

CATALYST RANTHANE

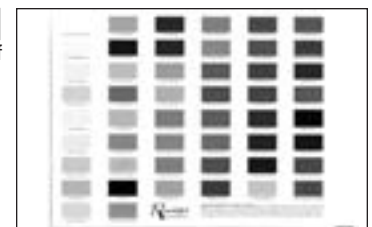
Catalyst for High Solids Polyurethane colors. 1 catalyst to 2 paint: 1 Pint catalyst to 1 Quart paint 2 Quarts catalyst to 1 Gallon paint 2 Gallons and 2 Quarts catalyst to 5 gallon paint. Gallons require hazardous material fees. Pints, quarts and gallons must be sent UPS ground only.



DESCRIPTION	PART NUMBER	PRICE EACH
PINT	AUCAT-PT	26.50
QUART	AUCAT-QT	54.90

RANDOLPH COLOR CHART

Randolph color chart color samples of Randolph All Purpose Colors.



RANDOLPH PROCEDURES MANUAL

Aircraft Finish Procedures Manual. This book is a must have for all Randolph Users. Its for finishes for all types of aircraft: Metal, Fabric and Composite. It gives helpful information for application, Mixing instructions and ratios, and tips.



DESCRIPTION	PART NUMBER	PRICE EACH
MANUAL	RAN-PM	0.00

DESCRIPTION	PART NUMBER	PRICE EACH
COLOR CHART	RAN-CHART	0.00



(800) 352-2296 · www.avgrafix.com

Many of the Decals, Placards and Marking Products you find in this catalog were manufactured by Us!

CALL US FOR CUSTOM-MADE PRODUCTS!

- Decals • Placards • Vinyl Graphics •
- Metal Graphics • Logos • Roundels •
- Laser-Cut / Engraved Plastics • N-numbers •
- Logbooks • Checklists • E-LSA Marking Kits •
- Custom interior/exterior kits for S-LSA
Manufacturers & Importers



255 GAY ST.
SHARON, CT 06069

www.EvansCooling.com

MANUFACTURER OF SPECIALTY ENGINE COOLANTS, FORMULATED WITHOUT WATER FOR HIGH TEMPERATURE PROTECTION, NO BOIL OVER AND NO CORROSION.



Coolant for Rotax Aircraft Engine Series 912 & 914

WICKS AIRCRAFT AUTHORIZED DISTRIBUTOR OF EVANS NPG+ ENGINE COOLANT AND PREP FLUID FOR USE IN ROTAX AIRCRAFT ENGINES.

Product information located on page #

Pak-Lite™
9v LED Flashlight



**Pak-Lite
Super White**

**Pak-Lite
Basic Glow**

**Pak-Lite
Belt Case**

1.5 oz.
Total Weight

- Used by the US Military
- Shockproof & Water Resistant
- Up to 1,200 hrs. Run Time
- 100,000 hrs. LED Bulb Life
- Available Options include:
 - Steady or Flashing Modes
 - Low - Off - High Modes
 - Colored LED Bulbs
 - Colored Plastic Caps

**Snaps to Any
9v Battery**



www.9voltlight.com

Toll Free: (877) 715-4448