

FINISHING MATERIALS

INSPECTION ACCESS PLATES

Popular concave or recessed types. Concave plates can be mounted flush from the inside, lexan ring included.



DESCRIPTION	PART NUMBER	PRICE EACH
Recessed	11-35	4.39
Concave, ring included	11-36	17.75

INSPECTION HOLE RINGS PLASTIC REINFORCING

3-1/2" I.D. Recommended attach with Goodyear Pliobond for best results.



DESCRIPTION	PART NUMBER	PRICE EACH
sold per each	11-27	1.35

ABRASIVE PADS

Treated fiber sponge, 3/8" thick x 6" x 9-1/2". Very effective mechanical cleaning and fine sanding action. Use with liquid detergents to clean all metal & painted surfaces. Use dry to remove burrs from metal edges, finish sand fine wood & plastic items. Use dry or with acid etch to remove corrosion residue from aluminum surfaces and remove rust from steel surfaces. Excellent for "scuff sanding" new aluminum surfaces, epoxy primer and two part urethane finishes to provide "tooth adhesion". Recommended as a cleanup after paint stripping to remove usual stubborn spots around rivet heads, seams, etc.



DESCRIPTION	PART NUMBER	PRICE EACH
per pad	11-46-UF	1.19

TACK CLOTH

A treated cloth used as a very light wipe to remove dust, lint and static charged particles from a surface just before spray painting. A must for professional painters. 18" x 36".



DESCRIPTION	PART NUMBER	PRICE EACH
tack cloth each	11-53	1.35

PAINT STRAINER CONES

64 x 56 mesh for pigmented dope.



DESCRIPTION	PART NUMBER	PRICE EACH
Per strainer	11-22-A	0.40

CLOSE QUARTER IRON

With "roll-bars" roll into fillets and under cambers. The flat sole is for sheeted and open structures; its bevelled edges provide constant head without marks. The toe is rounded and flat. Its special coating slides like butter, with almost no adhesive buildup. The thermostat reduces temperature drift to only 5 degrees.



DESCRIPTION	PART NUMBER	PRICE EACH
Iron	6201	25.90

6500 FABRIC IRON

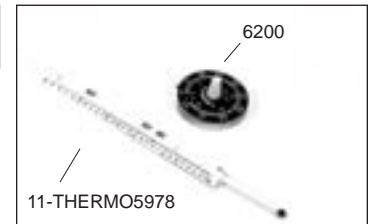
Unique iron has temperature control mounted on handle (not on shoe) which allows temperature control without burning fingers on hot shoe. Dial temperature accurate to within 3 degrees of shoe temperature. 21st Century.



DESCRIPTION	PART NUMBER	PRICE EACH
Iron	6500	41.71

SURFACE THERMOMETERS

#6200 ROUND Pocket thermometer accurately reads iron or engine temperatures up to 500 degrees by placing coil on surface.
#11-Thermo thermometer is 7-1/2" long mercury laboratory grade 130°F to 400°F in 10 degree increments.



DESCRIPTION	PART NUMBER	PRICE EACH
Round Thermometer	6200	41.71
Long Thermometer	11-THERMO5978	10.30

SILICONE HEAT SINK COMPOUND

1 oz syringe for more accurate thermal transfer during iron calibration.



DESCRIPTION	PART NUMBER	PRICE EACH
Syringe	11-HSC	8.25

RAINWIPE MICRO FIBER TOWEL

These microfiber towels are unsurpassed for cleaning and polishing. They are incredibly soft yet durable. The dirt goes into the deep microfiber filaments, instead of being pushed across the surface being cleaned which help prevent scratching. Lint Free. These towels are 16 inches by 16 inches. They can be washed over 500 times. 75% polyester, 25% polyamide. One towel.



SIZE	PART NUMBER	PRICE
16 INCHES X 16 INCHES	RW20430	4.00

FINISHING MATERIALS

FINE LINE MASKING TAPE

Polypylene 3/4" wide, 60 yd roll by 3M.



DESCRIPTION	PART NUMBER	PRICE EACH
3/4" fine line	3M-218	12.81

POLYESTER TWILL TAPE

Used for rib interbrace on most fabric covered aircraft wings. 50 yd. rolls nonadhesive.



DESCRIPTION	PART NUMBER	PRICE EACH
3/8" width	11-47-4	16.59

SELF-TAPPING SCREWS

Type A, slot head, low profile pointed end screws. Buy 10 boxes, any mix, and take a 10% discount. Box of 100.



DESCRIPTION	PART NUMBER	PRICE EACH
#4 x 1/4"	11-40-42	5.25
#4 x 3/8"	11-40-43	4.80
#6 x 3/8"	11-40-63	8.00

ALUMINUM WASHERS

2024-T3 aluminum washers for reinforcing screw heads or pop rivets used to rib stitch surfaces. 1/8" hole, .016" thick, 1/2" od. Sold box of 100 only.



DESCRIPTION	PART NUMBER	PRICE EACH
Box 100 aluminum washers	11-37-2	4.80

TEE HEAD PINS

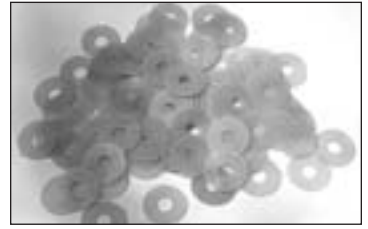
1-3/4" length. Used for temporarily holding fabric in place during recovering aircraft surfaces, upholstering furniture, etc.



DESCRIPTION	PART NUMBER	PRICE EACH
1/2 lb box	11-48	7.50

FLAT DRAIN GROMMETS

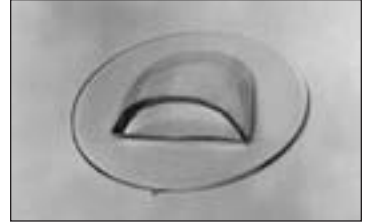
Plastic 3/4" x 5/16" hole. Sold only in box of 100.



DESCRIPTION	PART NUMBER	PRICE EACH
Flat drain grommets 100 per box	11-43-F	18.29

SEA PLANE GROMMETS

Plastic 1-1/8" dia., 1/4" lip.



DESCRIPTION	PART NUMBER	PRICE EACH
seaplane-each	11-43-S	0.58

ALUMINUM DRAIN GROMMETS

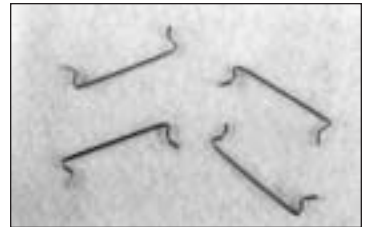
3/4" o.d., hole size 1/4".



DESCRIPTION	PART NUMBER	PRICE EACH
100 per bag	11-43-A	7.00

CESSNA FABRIC CLIPS

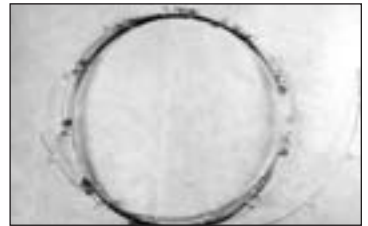
Individual spring steel clips used to attach fabric to metal ribs. Eliminates rib stitching.



DESCRIPTION	PART NUMBER	PRICE EACH
Cessna fabric clip	S-43	0.79

MARTIN FABRIC CLIPS INSTALLATION KIT

Kit includes template, cleaning tool, instructions and STC sheet. If clips are used to secure fabric on controls, add 50 ft.

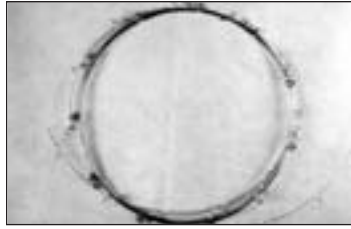


A/C MODEL	STC No.	FT REQ	PART NUMBER	PRICE EA
Piper- All models	SA126SO	175-250	MFC-P	30.00

FINISHING MATERIALS

MARTIN FABRIC CLIPS

Eliminates rib stitching. Approximately 10 many hours saved per wing. Gives a more secure, better streamlined installation and no interference with control cables. Fully FAA approved. Requires approximately 100 ft per wing. For aircraft with metal wing ribs only.



DESCRIPTION	PART NUMBER	PRICE EACH
25 ft. roll	MFC-1	11.25

RIB STITCH NEEDLES

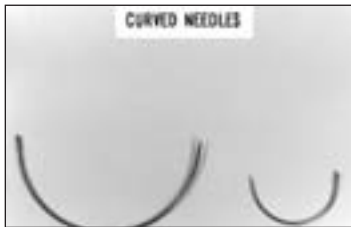
12" and 18" in either straight or custom curved tip.



DESCRIPTION	PART NUMBER	PRICE EACH
12" Straight	11-42-12	5.78
18" Straight	11-42-18	7.80
12" Curved tip	11-43-12	9.99
18" Curved tip	11-43-18	13.92

CURVED NEEDLES

Size measured around the curve.



DESCRIPTION	PART NUMBER	PRICE EACH
3" needle	11-41-3	1.99
6" needle	11-41-6	2.15

CLOTH MASKING TAPE

Rubber based adhesive on cotton cloth. Used as heavy duty, all purpose tape, masking sharp edges and corners under fabric covering.



DESCRIPTION	PART NUMBER	PRICE EACH
1" x 60 yd. roll	11-32-1	14.75

MASKING TAPE CREPE GENERAL PURPOSE

Economy quality. 60 yard rolls.

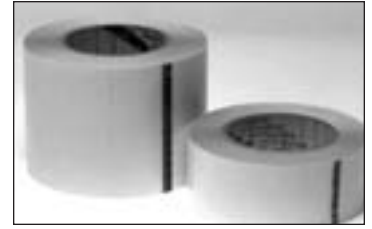


DESCRIPTION	PART NUMBER	PRICE EACH
3/4" wide	11-18-3	3.78

3M LEADING EDGE TAPE

Polyurethane - designed to protect light aircraft from the damaging effects of rain, insects, sand, snow and sleet.

A tough durable protective tape for exposed surfaces. Protects, wings, struts and horizontal and vertical stabilizers. May be applied to clean metal or to commonly used aircraft paints over metal or fabric. NOT to be used on props, helicopter rotors or balanced surfaces. Glossy transparent. 006 thick, sold by the roll only.



DESCRIPTION	PART NUMBER	PRICE EACH
2" x 36 yd roll	8672-2	109.72
4" x 36 yd roll	8672-4	205.28

ADHESIVE RIB LACING REINFORCING TAPE

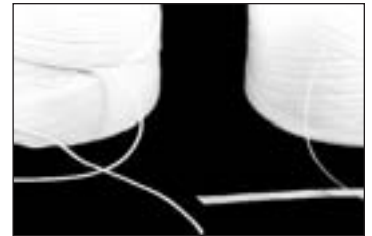
50 yd. rolls of woven polyester twill tape with high tack adhesive backing which eliminates the time consuming procedure of mounting with fabric coating. Strength - 96 lbs. per 1/2" width. Available in 1/4", 3/8", and 1/2" widths.



DESCRIPTION	PART NUMBER	PRICE EACH
1/4" width	RLRT-1/4	50.00
3/8" width	RLRT-3/8	54.45
1/2" width	RLRT-1/2	57.70

RIB LACING CORD - DACRON

A coated cord with over 40 lbs. tensile strength. Standard RLC-S round cord measures .035 diameter, 60 lbs. strength. Flat RLC-F .012x080, 50 lbs. strength, flat braided. Each roll contains 500 yards.



DESCRIPTION	PART NUMBER	PRICE EACH
Standard	RLC-S	42.50
Flat	RLC-F	42.50

SEWING THREAD HAND & MACHINE

Machine thread is used to sew sections of fabric together to form an envelope or blanket. Over 10 lbs. tensile strength. Packaged in 4 oz. spools, 500 yards. Polyester

Hand thread is used for hand sewn seams or large repairs. Over 14 lbs tensile strength. Packaged in 1/2 lb spools, 250 yards. Polyester



DESCRIPTION	PART NUMBER	PRICE EACH
Machine thread	MST	14.85
Hand thread	HST	10.70

FINISHING MATERIALS

Dopes, enamels, and lacquers are formulated in such a way that the pigments or film material is suspended in the appropriate solvents. These may be thinned or reduced to make them less viscous for spraying. Addition of the correct type and amount of thinner is of the utmost importance. Be sure to use only the thinner or reducer recommended by the paint manufacturer, and thin to the proper viscosity by mixing the proper parts of material and thinner as specified; or better, by the viscosity called for or known to be correct from experience. This may be tested by a viscosity cup.

TOLUOL

Commercial grade of toluene which is a liquid aromatic hydrocarbon similar to benzene, but less volatile, flammable or toxic, Toluol does a satisfactory job reducing enamels, engine enamels, wing walk compounds, zinc chromate primer, acid proof black paint and white dope proof paints. In addition to using it as a reducer for these materials, it is in most cases satisfactory to use to wash down a surface to remove wax after a paint stripper has been used.



HAZARD

DESCRIPTION	PART NUMBER	PRICE EACH
1 Quart	1500-QT	7.50
1 Gallon	1500-GAL	20.80

METHYL-ETHYL-KETONE

(MEK) An important, low cost solvent similar to acetone. It is used as a cleaning agent to prepare a surface for painting and as a stripper for certain finishes. It removes wax and grease from a surface prior to spraying a finish, and it finds use in the engine shop around the ignition and carburetion systems for cleaning and decarbonizing parts.



HAZARD

DESCRIPTION	PART NUMBER	PRICE EACH
1 Quart	1100-QT	8.95
1 Gallon	1100-GAL	27.25

ACETONE

A flammable liquid ketone used as a solvent and a constituent in many aircraft finishes. Like MEK, acetone is quite universally used as a cleaner. It is used to remove lacquer finishes and for cleanup after painting. It will soften acrylics or lacquers that have setup in spray guns or hoses. But, it has little effect on polyurethane which has cured in the gun or lines. When buying acetone, be sure to get only virgin acetone, as recovered acetone is often so acidic that it can damage anything on which it is used.



HAZARD

DESCRIPTION	PART NUMBER	PRICE EACH
1 Quart	1200-QT	7.60
1 Gallon	1200-GAL	24.30

SILICONE RESIN HIGH TEMP COATING

Used by NASA on the space shuttle to withstand high reentry temperatures, this proven ceramic-based silicone coating is designed to renew and extend the life of exhaust systems. It will withstand temperatures to 1500° F, while allowing heat and moisture to pass through metal and coating to prevent rust formation. No primer required. Dries tack-free in 15-30 minutes. Heat curing, or the heat produced under normal engine operation provides maximum resistance to solvents, salt-spray and humidity. 11 oz aerosol.



DESCRIPTION	PART NUMBER	PRICE EACH
Flat Black	SP102	9.50
Flat Silver-Gray	SP106	8.50

PAINT STRIPPER AEROSOL

Designed to remove urethane, polyurethane, enamel, lacquer, epoxy and primer paint coatings from fiberglass, aluminum and other metals. One or two applications lift coatings, allowing easy removal by flushing or scraping. 16 oz. aerosol



DESCRIPTION	PART NUMBER	PRICE EACH
Aerosol paint stripper	SP575	7.00

PAINT REMOVER LIQUID

A safe, biodegradable paint stripper proven to be one of the fastest and most thorough non-hazardous paint strippers available. Recommended for finishes such as enamels, polyurethane, epoxy and chromate primers, fuel resistant coatings, etc. May be safely applied over aluminum, titanium, or steel substrates.

Application by airless sprayer is recommended for even coating. For use above 39 degrees F. Dwell time: 1-6 hrs. Coverage: 40-90 sq ft/gal. Approved by Airbus, Raytheon, FedEx, etc. Ships UPS non-hazardous.

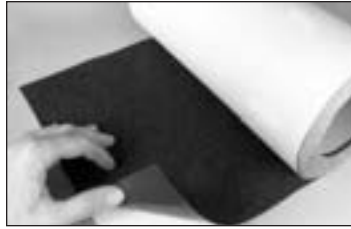


DESCRIPTION	PART NUMBER	PRICE EACH
A/C PAINT STRIPPER-GAL	SV35-G	59.99
A/C PAINT STRIPPER-5 G	SV35-5G	220.50

FINISHING MATERIALS

WING WALK

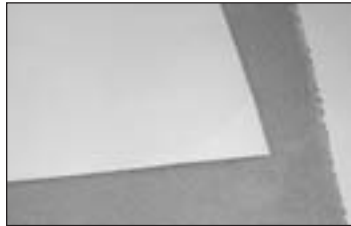
12 inch and 18 inch width, black, anti-slip high traction safety tape peels off and presses in place. This coarse adhesive-backed grit surface installs in seconds to any clean, dry, oil free surface. Sold only by the running foot.



DESCRIPTION	PART NUMBER	PRICE EACH
Wing Walk - 12"	JM-3200	3.94
Wing Walk - 18"	JM-3200-18	5.66

CLEAR WING WALK

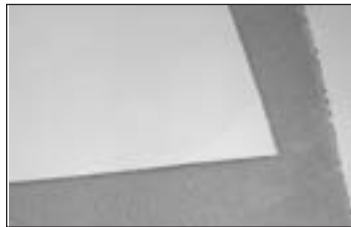
Available in 12" and 18" widths, this wing walk material provides outstanding slip resistance, flexibility, and durability. Unobstructed clear construction will not hide the aircraft finish. Withstands -40 to 220 F temperatures, and is fade resistant to long term sun exposure. Peeling off the backing reveals a pressure sensitive adhesive for easy application. Sold by the running foot. Meets MIL-W-5044C.



DESCRIPTION	PART NUMBER	PRICE EACH
12" clear wing walk	WW-CLR12	5.94
18" clear wing walk	WW-CLR18	7.95

GLOW IN THE DARK WING WALK

This white wingwalk material provides full anti-slip protection, even under nighttime skies, by use of its glow-in-the-dark construction. Easily applied by removing protective backing to expose a superior pressure sensitive adhesive and then pressing into place. Flexible, durable, and fuel and weather resistant. Temp limit: -40 to 220F. Available in 12" and 18" widths. Sold by the running foot. Meets MIL-W-5044C.



DESCRIPTION	PART NUMBER	PRICE PER FOOT
12" luminescent white wing walk	WW-WHT12	6.75
18" luminescent white wing walk	WW-WHT18	9.55

WING WALK

Excellent replacement for wing walk tapes. Can also be used in plant walkway, stairs and metal boat floors. Black paint on liquid. Approximate coverage: 15 sq ft per quart.



HAZARD

DESCRIPTION	PART NUMBER	PRICE EACH
Quart	X1567-QT	17.45
Gallon	X1567-GAL	55.00

LIQUID SUPER SEAM CEMENT

New, improved clear formulation offers twice the peel strength of the original. Used to cement fabric and attach fabric to airframe with no speed restrictions. Compatible with all Randolph dopes. Dries in 15-30 minutes with no thinning. If thinning is necessary, thin with MEK. Shelf life 2 years. QUART



DESCRIPTION	PART NUMBER	PRICE EACH
CAN	CSSQT	28.65

CECONITE MANUAL

Procedure manual 101 for the Ceconite aircraft covering process. Spiral bound 44 page booklet includes material estimates, product information and step-by-step instructions. Written by Jon Goldenbaum.



DESCRIPTION	PART NUMBER	PRICE EACH
Ceconite manual	CEC-MAN	10.00

CECONITE TAPE

Available in 1.8 oz light or 2.7 oz. Straight, pinked or bias rolls in various yardages.



DESCRIPTION	SIZE	PART NUMBER	PRICE
1.8 oz Pinked	1" x 25 yd	HT104-1	18.55
1.8 oz Pinked	1-1/2" x 25 yd	HT104-1.5	18.99
1.8 oz Pinked	2" x 50 yd	HT104-2	35.75
1.8 oz Pinked	3" x 25 yd	HT104-3	29.00
1.8 oz Pinked	4" x 25 yd	HT104-4	31.45
1.8 oz Pinked	6" x 25 yd	HT104-6	42.00
2.7 oz Straight	1" x 50 yd	CEC-1	17.25
2.7 oz Straight	1-1/2" x 50 yd	CEC-1-1/2	23.45
2.7 oz Straight	2" x 50 yd	CEC-2	28.65
2.7 oz Straight	3" x 50 yd	CEC-3	43.30
2.7 oz Straight	4" x 50 yd	CEC-4	50.90
2.7 oz Straight	6" x 50 yd	CEC-6	60.85
2.7 oz Pinked	1" x 25 yd	LT-P-1	14.75
2.7 oz Pinked	1-1/2" x 25 yd	LT-P-1-1/2	15.20
2.7 oz Pinked	2" x 50 yd	LT-P-2	35.75
2.7 oz Pinked	3" x 25 yd	LT-P-3	27.05
2.7 oz Pinked	4" x 25 yd	LT-P-4	31.20
2.7 oz Pinked	6" x 25 yd	LT-P-6	40.90
2.7 oz Pinked Bias	2" x 25 yd	HT102-2BS	28.55

FINISHING MATERIALS

CECONITE FABRIC

Fabric is 70" wide. Available in 3.7 oz. and 2.8 oz. weights. 101 fabric has 52x52 thread count, 3.7 oz average strength 121 lbs. Fabric 102 has 66x66 thread count, 2.8 oz., average strength 95 lbs.



DESCRIPTION	PART NUMBER	PRICE EACH
3.7 oz fabric	101-3.7	12.00
2.8 oz fabric	102-2.8	11.40

UNCERTIFIED CECONITE FABRIC

NOT CERTIFIED: FOR USE IN NON CERTIFIED AIRCRAFT ONLY. Can be used for covering plywood surfaces on any ultralight aircraft or on noncertified aircraft. Thread count: 98x98 in. Weight: 1.7 oz/yd. Tension: 35 oz/in. Breaking strength: 67 lbs.



DESCRIPTION	PART NUMBER	PRICE P/YARD
Non certified 1.7 oz	LIGHT-17	8.65

RIB LACING REINFORCING TAPE

Two widths available. Reinforcing tape is an adhesive-backed polyester twill materials that is attached to the fabric over the rib cap before rib lacing. It reinforces the fabric so that rib laces, screws or rivets don't cut through the fabric when mechanical attachments are snugged down. Use the width of tape that exactly matches the width of your rib cap. Use two parallel 1/2" tapes to cover a 1" rib.



DESCRIPTION	PART NUMBER	PRICE EACH
3/8" tape	RT-3/8	45.40
1/2" tape	RT-1/2	45.60

RIB LACING CORD CECONITE

500 yard roll. Check AC.43.13.1A if you are unsure of rib lace spacing of your aircraft as it was manufactured.



DESCRIPTION	PART NUMBER	PRICE EACH
500 yd roll	CRLC	35.26

SEWING THREAD

Machine or hand sewing thread. 500 yds per roll. Use machine thread to sew your own envelopes or partial envelopes if sewing machine can handle. Use hand sewing thread when cemented seams won't work such as no structure under the seam.



DESCRIPTION	PART NUMBER	PRICE EACH
Machine thread	D69	13.85
Hand thread	D207	10.70

SANDABLE -AEROSOL PRIMER-FILLER

A quick-dry, sandable primer specially formulated to fill scratches or pin holes caused by sanding or fillers on metals, fiberglass, wood and most plastics. Can also be used where substrates tend to flex. Prepares the surface for the finish coat and forms a strong corrosion barrier. Use under any acrylic, lacquer, enamel or epoxy finish coats.



Primer is zinc chromate yellow in 11 oz. aerosol can.

DESCRIPTION	PART NUMBER	PRICE EACH
Aerosol can - 11 oz.	SP306	6.85

WHEEL PAINT & PROTECTANT

Clear gloss polyurethane wheel paint is specially formulated to protect wheels from extreme temperatures, salt, brake dust, and rocks. Non-yellowing resists chipping, fading, cracking, and oxidation. Gives long-lasting protection and shine. No primer required. 16 oz. aerosol can.



DESCRIPTION	PART NUMBER	PRICE EACH
16 oz spray can - clear	SP184	7.00

FABRIC PEEL PLY

1.8 oz woven polyester cloth 63" wide. Sold by the running yard only. Ideal for usage as peel ply



DESCRIPTION	PART NUMBER	PRICE P/YARD
1.8 oz cloth	PP-63	4.99

FINISHING MATERIALS

ALUMIPREP #33

Brush on chemical to clean, brighten and remove oxidation from aluminum. Prepares aluminum for painting and welding. Brightens and cleans badly corroded aluminum to its natural appearance.

HAZARD



DESCRIPTION	PART NUMBER	PRICE EACH
Quart	33-QT	17.00
Gallon	33-GAL	36.50

ALODINE-1201

Brush-on chemical to condition aluminum for paint, to improve paint adhesion and corrosion resistance. After precleaning with Alumiprep #33, apply full strength with brush or sponge. Rinse with water and surface is ready for painting. The visible coating leaves the surface with a golden coloration. One quart treats approximately 100 square feet. Meets Mil-C-5541B, Class 1A, Method B.



HAZARD

DESCRIPTION	PART NUMBER	PRICE EACH
Quart	1201-QT	17.80
Gallon	1201-GAL	34.00

ALODINE - 1001

Brush-on chemical to condition aluminum for a clear finish and corrosion resistance. Maintains the original aluminum appearance. The invisible coat provides corrosion proofing to the brightened aluminum surface and also acts as a barrier against continued corrosion.



DESCRIPTION	PART NUMBER	PRICE EACH
Quart	1001-QT	15.67

ALODINE TOUCH N' PREP PEN

A specially formulated conversion coating for metals developed for dry-in-place application. First thoroughly clean the surface with a Scotch-Brite pad, rinse with water, wipe dry, and then apply a thin, wet coat using overlapping strokes. Air drying leaves a clean, residue free surface ready for painting; no rinsing or wiping required. Coverage for light-moderate coat: 35-50 sf. Shelf life: 24 mos unopened. (12 mos opened, not to exceed 24 mos total) Meets MIL-DTL-81706A, Cls 1A & 3. NOT hazardous ships by any method.



DESCRIPTION	PART NUMBER	PRICE EACH
ALODINE PREP PEN	TNP1132	78.00
REPLACEMENT TIP	TNP-TIP	2.25

PREVAL PORTABLE SPRAY GUN

Portable spray gun with a capacity of 16 oz. Perfect for any small touch up job. Sprays enamels, lacquers, epoxy coatings, zinc chromate, acrylics, primers, and more. Detachable container jar comes with its own cap, allowing for safe storage of any leftover paint. Cleans up quickly and easily using appropriate solvent. Replacement container jar available. Must be sent UPS ground only. Can not be sent outside of U.S.



DESCRIPTION	PART NUMBER	PRICE EACH
SPRAY GUN	PRV67	6.87
REPLACEMENT JAR	PRV69	2.48

PROTECTOSEAL 2 QT PLUNGER CAN

Manual depression of spring mounted dasher delivers measured amount of flammable liquid to swab or cloth for production line operations. Perforated metal flash arrester in dasher cup protects against ignition of can contents, reduces escape of noxious vapors and aids in preventing costly evaporation losses. Plunger can holds 2 quarts measures 8-1/4" x 5-1/2".



DESCRIPTION	PART NUMBER	PRICE EACH
2QT PLUNGER CAN	241A	83.06

PREKOTE SURFACE PRETREATMENT

PreKote is a non-hazardous, non-toxic alternative to chromate conversion coatings. Offering superior paint adhesion, improved paint flexibility & advanced corrosion protection, it can reduce paint preparation time & costs by up to 40% over traditional chromated conversion coating processes. Simple 3 step process requires only a hand or air sprayer, fine aluminum oxide pads, a lint-free cloth & water for application. May be used on aluminum, magnesium, titanium, steel, composite & many plastics. Coverage w/low vol sprayer: 200-300 sf/gal. Approved by U.S. DOD & Boeing. Ships hazmat free



DESCRIPTION	PART NUMBER	PRICE EACH
QUART	PK1002	23.95
GALLON	PK1030	59.00

FABRIC TESTER

Thoroughly test the fabric on your aircraft for minimum FAA requirements without removing or punching any holes in fabric. Accurately calibrated in one inch pounds, tester should be pushed directly against the fabric at right angle, evenly and slowly taking note of its reading at all times. Reading is taken at the point where the small tube telescopes into the large tube. For actual fabric strength, it is necessary to apply enough pressure to break the small point through the fabric noting the reading at that time. Store in box away from dust and dirt.



DESCRIPTION	PART NUMBER	PRICE EACH
Tester	MFT-1	257.66

FINISHING MATERIALS

PAINT REMOVER - SPRAY

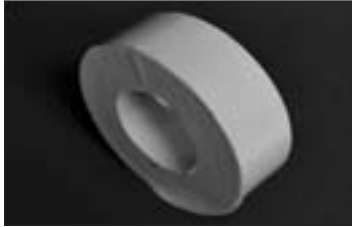
Designed to remove urethane, polyurethane, enamel, lacquer, epoxy, and primer paint coatings from aluminum and other metals. One or two applications lift coatings, allowing easy removal by flushing or scraping. 16 oz aerosol.



DESCRIPTION	PART NUMBER	PRICE EACH
SPRAY CAN	SP575	7.00

LEADING EDGE TAPE

Used on many commercial aircraft, this tough abrasion resistant tape is commonly used for the protection of radomes, airframe leading edges & props. Made of glossy, transparent polyurethane with an acrylic adhesive. 9 mil thickness. Tensile strength: 125 psi. Max service temp: 285F



DESCRIPTION	PART NUMBER	PRICE EACH
2"X60 YD	LET-2	58.37
4"X60 YD	LET-4	114.74

CONTEGO FIRE RETARDENT PAINT

Contego fire barrier latex has been proven effective as fire resistant coating for wood, steel, aluminum, drywall, spray foam and other materials. Contego is designed to reduce risk of ignition and suppress smoke production in the event of a fire. AVAILABLE IN QUARTS AND GALLONS ONLY!



DESCRIPTION	PART NUMBER	PRICE EACH
FIRE RETARDENT PAINT	FRP-GAL	85.00
FIRE RETARDENT PAINT	FRP-QT	22.00

FLAMEPROOF COATING

Used by NASA on the space shuttle to withstand high re-entry temperatures, this proven ceramic-based silicone coating is designed to renew and extend the life of exhaust systems. It will withstand temperatures to 1500F, while allowing heat and moisture to pass through the metal and coating to prevent rust formation. No primer is required. Dries tack-free in 15-30 min. Heat curing (or the heat produced under normal engine operation) provides maximum resistance to solvents, salt-spray, and humidity. 11 oz aerosol.



COLOR	PART NUMBER	PRICE EACH
FLAT BLACK	SP102	9.50
FLAT SILVER	SP106	8.50

SANDABLE AEROSOL PRIMER-FILLER

A quick-dry, sandable primer specially formulated to fill scratches or pin holes caused by sanding or fillers on metals, fiberglass, wood, and most plastics. (Also recommended where substrates tend to flex) Both prepares the surface for the finish coat and forms a strong corrosion barrier. Use under any acrylic, lacquer, enamel, or epoxy finish coats. Zinc Chromate Yellow. 11 oz aerosol



SIZE	PART NUMBER	PRICE EACH
11 OZ AEROSOL	SP306	6.85

SELF ETCHING AEROSOL PRIMER

A pre-treatment primer that chemically etches itself to aluminum, bare steel, & galvanized steel. Creates a superior bond to most surfaces to provide excellent corrosion protection and superb adhesion for additional coatings. May be sanded after 1 hr, and re-coated after 2 hrs. 19 oz aerosol by Mar-Hyde.



SIZE	PART NUMBER	PRICE EACH
19OZ SPRAY CAN	5111	14.25

PRIMER PISTOL

The 'Primer Pistol' is an easy-to-use pneumatic paint gun that is designed for use with small quantities of liquid or primer, making it ideal for priming small aircraft parts. By use of disposable cups for paint reservoirs, it cleans up quickly.



DESCRIPTION	PART NUMBER	PRICE EACH
DG-10 SPRAY GUN	PRGUN	22.86

FINISHING SPRAY CAN GUN

Turns spray cans into spray guns with a quick snap on or off. Eliminates painful finger fatigue and provides accurate and comfortable control. The exclusive V-notch locking system firmly snaps on most spray cans. Package contains 2 handles.



FITS	PART NUMBER	PRICE EACH
SPRAY CANS	CANGUN	2.95

FINISHING MATERIALS-SUPERFLITE

1.7 OZ NON CERTIFIED LIGHT

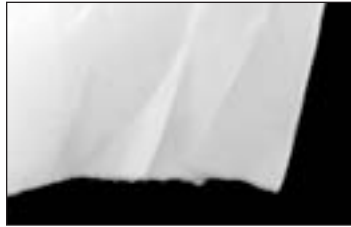
SF104A Non-Certified Fabric - A light-weight version of the SF102 fabric. Weight is 1.7 oz. per sq. yard. For homebuilt aircraft only. Recommended for covering plywood surfaces on any aircraft and any ultralight aircraft that is NOT certified. This fabric is not stamped. 67" wide and sold by the yard.



DESCRIPTION	PART NUMBER	PRICE EACH
NON CERTIFIED	SF104ANON	5.70

2.7 OZ CERTIFIED DACRON

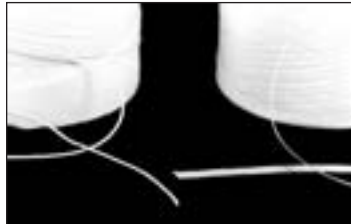
SF102 Certified Polyester/Dacron Fabric - Superflite 102 is an ultra-fine weave polyester/dacron fabric with a weave, thread count, and appearance almost matching grade A cloth, but it has the superior strength and durability of a synthetic cloth. This fabric is easily shrunk by the application of heat from a calibrated household iron. 2.7 oz per sq. yard. FAA-approved (stamped) for Type-Certified aircraft. Approximately 72 inches wide. Sold by the yard.



DESCRIPTION	PART NUMBER	PRICE EACH
72" WIDTH CERTIFIED	SF102C	8.80

FLAT RIB LACING CORD

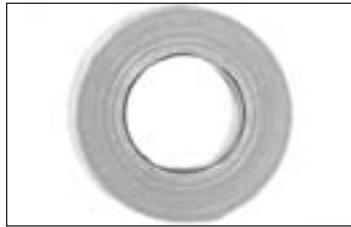
Flat Rib Lacing Cord - Synthetic waxed linen cord intended for use in rib stitching with Dacron fabric, like the SF102 Certified Superflite fabric. Conforms to specification MIL-C-2520A, Type 1. FAA-approved. Comes in a spools of 250 yards or 500 yards.



DESCRIPTION	PART NUMBER	PRICE EACH
500 YARDS	SF694-500	36.00

STICKY-BACKED REINFORCEMENT TAPES

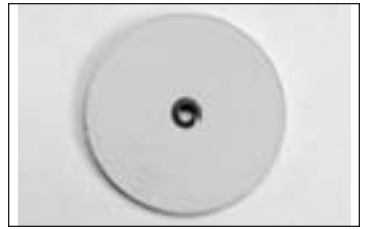
Sticky Back Reinforcement Tape - Polyester twill tape has adhesive backing for easy application. Apply to fabric in areas before rib stitching and riveting over ribs and as an anti-chafing materials on metal parts to avoid fabric wear. 3/8, 1/4, 1/2 and 1" widths, 60 yd roll. FAA approved.



DESCRIPTION	PART NUMBER	PRICE EACH
1" 60 YD TAPE	SF-REINF1	28.60
1/4" 60 YD TAPE	SF-REINF1/4	28.50
3/8" 60 YD TAPE	SF-REINF3/8	32.25
1/2" 60 YD TAPE	SFREINF1/2	12.50

TWILL TAPE

Twill Tape: Sizes only 1/2" & 1/4", 36 yd roll. Used to brace the ribs in the X pattern before covering. Twice as strong as cotton tape. Two sizes available 1/2" and 1/4" widths.



DESCRIPTION	PART NUMBER	PRICE EACH
1/2" TWILL TAPE	SF-TWILL1/2	12.75
1/4" TWILL TAPE	SF-TWILL1/4	11.90

SUPERFLITE BIAS TAPES

Pinked Edge Tape - Made from the SF102 Certified fabric. Weight is 2.7 oz. per sq. yard. Measures 2 inches in width, and it has a pinked edge. FAA-approved. Comes in a 50 yard roll. Does not fray.



DESCRIPTION	PART NUMBER	PRICE EACH
BIAS PINKED 2"X50 YD	SF102-2PB	21.69
BIAS STRAIGHT	SF102-2SB	21.69
BIAS PINKED 3"X25	SF102-3PB	31.32
BIAS STRAIGHT 3"X25	SF102-3SB	28.00
BIAS PINKED 4"X25	SF102-4PB	40.23
BIAS STRAIGHT 4"X25	SF102-4SB	36.20

SUPERFLITE PINKED TAPE

Pinked Edge Tape - Made from the SF102 Certified fabric. Weight is 2.7 oz. per sq. yard. Measures 1 inch in width with a pinked edge. FAA-approved. Sold in a 50 yard roll.



DESCRIPTION	PART NUMBER	PRICE EACH
PINKED 1"X50 YD ROLL	SF102-1P	18.38
PINKED 1-1/2" 2.7 OZ	SF102-15P	25.85
PINKED 2X50 YD 2.7	SF102-2P	24.93
PINKED 3"X50 YD 2.7	SF102-3P	35.55
PINKED 4"X50 YD 2.7	SF102-4P	41.00
PINKED 6"X50 YD 2.7	SF102-6P	57.59

SUPERFLITE STRAIGHT TAPE

Straight Edge Tape - Cut from the SF102 Certified fabric. Weight is 2.7 oz. per sq. yard. Measures 1 inch in width with a straight edge. FAA-approved. Sold in a 50 yard roll.



DESCRIPTION	PART NUMBER	PRICE EACH
STRAIGHT 2"X50 YD	SF102-1S	15.53
STRAIGHT 1-1/2" 2.7	SF102-15S	21.10
STRAIGHT 2" X 50 YD	SF102-2S	25.79
STRAIGHT 3"X50 2.7	SF102-3S	38.97
STRAIGHT 4"X50 YD	SF102-4S	45.81
STRAIGHT 6"X50 YD	SF102-6S	54.75

FINISHING-PAINT SYSTEMS-SUPERFLITE

SUPERFLITE SYS VI TOPCOATS - GALLON



This is the final step for the System VI cover and finish system. If you want an extremely durable, long lasting, high-gloss "wet look" finish, this is the paint to use. This is a specially formulated, catalyst-activated, high solids, low VOC polyurethane paint that not only works great with fabric, it is also the perfect choice for aluminum, fiberglass, and composite material. This will prevent ugly mismatches between unlike surfaces like the engine cowling and the fabric. The match is perfect every time. Color choices are virtually unlimited. Recommended for use with the complete Superflite System VI. Seven year shelf life if unopened. One year shelf life if opened without catalyst. Fabric Primer Filler, use SF6500. Metal Primer, use SF10. Comes in 1 gallon can. Contains 96 fluid ounces, with room to add required catalyst. Topcoats also available in Quarts. Ask for a color chart.

EPOXY PRIMER



Structure/fiberglass Primer Epoxy for System VI (1 QUART) - To be used with metal, fiberglass, and composite materials. Should be mixed with Epoxy Primer Catalyst, SF320, before using. Mix ratio 2:1. Spray can chromate primers are not suitable, as they will be affected by the solvents. Unopened - Shelf life is 7 years. Opened - Shelf life is 1 year. Pot Life: 1 hour, Allow 30 minutes between coats. Dry time: 8 hours. Temperatures must be above 65 degrees to cure; 70 degrees is ideal. Available in Quarts and Gallons.

DESCRIPTION	PART NUMBER	PRICE
EPOXY PRIMER	SF10-QT	65.85
EPOXY PRIMER	SF10-G	148.08

FLEX AGENT



SF6700-08 Flex Agent - Created to make the primer more flexible. Mix with the SF6500 Primer Base, the SF6600 Catalyst, and the SF6820 Reducer to create the primer/filler coat. The flex agent is already mixed into the paint. FAA-approved. Shelf life of 5 years if unopened; 1 year if opened. Mix ratio 1 primer, 1 catalyst, 1/2 flex agent.

DESCRIPTION	PART NUMBER	PRICE
FLEX AGENT PINT	SF6700-PT	53.67
FLEX AGENT QUART	SF6700-QT	107.34
FLEX AGENT GALLON	SF6700-G	68.50

SUPERWASH



For use before applying the primer/filler coats and after applying the surface tapes. It is important to clean the fabric at this point. A wipe-down with an alcohol-based cleaner, like the Superwash, and a clean, lint-free cloth is quick & easy. It is fast-drying, so primer/filler can be applied immediately after cleaning with the Superwash.

DESCRIPTION	PART NUMBER	PRICE
FABRIC CLEANER	SF-SUPERWASH	17.34

COLOR	PART NUMBER	PRICE
SIGNAL LIGHT GRAY	SF2106-G	165.00
DARK VIOLET POLY	SF2107-G	215.00
BLANKE YELLOW	SF2108-G	305.00
BERNATH WHITE	SF2110-G	165.00
AZTEC SILVER	SF2111-G	215.00
LT ANTELOPE FIREMIST	SF2112-G	215.00
ATLAS GREY METAL	SF2113-G	180.00
MEADOW GREEN	SF2114-G	260.00
STRATO GREEN	SF2115-G	215.00
GRAPHITE POLY	SF2117-G	180.00
WINE METALLIC	SF2118-G	260.00
SUN VALLEY IVORY	SF2119-G	165.00
ORACLE RED	SF2123-G	260.00
ORANGE YELLOW	SF2126-G	165.00
INSIGNIA RED	SF2128-G	305.00
INSIGNIA BLUE	SF2129-G	180.00
INSIGNIA WHITE	SF2130-G	165.00
STINSON MAROON	SF2131-G	305.00
TORCH RED	SF2132-G	305.00
JUNEAU WHITE	SF2133-G	165.00
HUSKY YELLOW	SF2134-G	215.00
SUNRISE RED	SF2135-G	305.00
MEDITERRANEAN BLUE	SF2136-G	180.00
MEDIUM GRAY	SF2137-G	165.00
PIPER CUB YELLOW	SF2138-G	305.00
POLAR GRAY	SF2148-G	165.00
DIANA CREAM	SF2149-G	215.00
SACRAMENTO GREEN	SF2155-G	180.00
INTENSE BLACK	SF2176-G	165.00
STARLIGHT BLUE	SF2415-G	180.00
INCA GOLD	SF2425-G	215.00
SILVERADO SILVER	SF2433-G	215.00
DAYTONA WHITE	SF2437-G	165.00
CADILLAC RED	SF2438-G	215.00
PEPSI BLUE	SF2439-G	180.00
BAHAMA BLUE	SF2442-G	165.00
LEMON YELLOW	SF2445-G	260.00
JAGUAR GREEN	SF2449-G	215.00
CLARET	SF2450-G	305.00
ROYAL BLUE	SF2451-G	180.00
MATTERHORN WHITE	SF2452-G	165.00
FLEET WHITE	SF2453-G	165.00
LOCKHAVEN YELLOW	SF2454-G	305.00
SNELL YELLOW	SF2455-G	180.00
SPRUCE METALLIC	SF2456-G	215.00
CITRUS YELLOW	SF2458-G	260.00
CESSNA SUNSET RED	SF2460-G	305.00
MATADOR RED	SF2461-G	260.00
CRUISER ORANGE	SF2462-G	260.00
CESSNA TIGER ORANGE	SF2463-G	215.00
OCALA ORANGE	SF2464-G	180.00
DEROSIER SILVER	SF2466-G	180.00
MAULE YELLOW	SF2467-G	145.95
LIME GREEN	SF2468-G	260.00
LAKELAND BLUE	SF2469-G	165.00
NASSAU TURQUOISE	SF2470-G	165.00
MAULE BLUE	SF2471-G	215.00
SPITFIRE RED	SF2472-G	305.00
CESSNA VESTAL WHITE	SF2473-G	165.00
SANDALWOOD	SF2474-G	180.00
BUCKSKIN	SF2475-G	165.00
HICKORY BROWN	SF2476-G	215.00
MOCHA BROWN	SF2477-G	180.00
BRIGHT RED	SF2498-G	304.88
MAULE YELLOW	SF3467-G	108.00