

FINISHING GEAR

RAZOR BLADES SINGLE EDGE

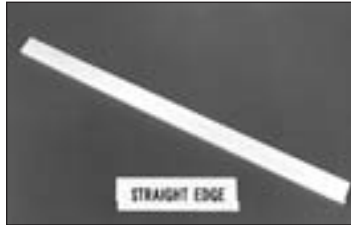
Box of 100 used for trimming rough edges of laminates



DESCRIPTION	PART NUMBER	PRICE EACH
Box 100 - blades	RAZ-1	5.99

STRAIGHT EDGE

Kiln-dried spruce board used for checking the straightness of flying surfaces during composite construction.



DESCRIPTION	PART NUMBER	PRICE EACH
3/4" x 3-1/2" x 6' board	T100-001	48.72

DECIMAL TAPE MEASURE

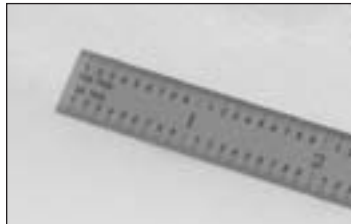
This 12' steel tape measure, with 1/2" blade, is graduated in 10ths and 100ths. Very handy for all aircraft construction.



DESCRIPTION	PART NUMBER	PRICE EACH
12 ft tape measure	61-112	16.82

FLEXIBLE STEEL RULE

12 inches long by 1/2 inch wide, this flexible steel ruler has graduations of 32nd and 64th on one side, 50th and 100th on reverse. Ultra fine black printing on chrome finish.



DESCRIPTION	PART NUMBER	PRICE EACH
Flexible steel ruler	1246	12.99

THREAD MEASURING GUIDE & TOOL KIT

Used for measuring tube and pipe fittings, this handy kit includes a thread gauge (American and Metric) an inside/outside caliper (inches and millimeters) and 2 seat angle gauges a 37°/45° and a 12°/30°. Included in the carrying case is a 24 page instruction and fitting identification booklet



DESCRIPTION	PART NUMBER	PRICE EACH
Measuring guide & tool kit	TA-1002	68.72

6" CALIPER

Black face, white markings and orange hand make these calipers easy to read. Continuous dial reads 0-100. Caliper has adjustable zero setting, super smooth slide lock, with beam scale chrome plated. 4-way measurement - inside, outside, step and depth. Knurled thumb roll.



DESCRIPTION	PART NUMBER	PRICE EACH
6" Caliper	610-5027	23.90

NORTON BUTYL GLOVES

Exhibit the highest permeation resistance to gas and water vapor of any glove compound available today. Ideal for use in ketones and esters, polyesters and epoxies. Glove Set: 14" smooth butyl glove set with cotton liners. Meets mil spec MIL-G-43976 for chemical protection. Order in small, medium or large set. Manufactured by Norton Brunswick.



DESCRIPTION	PART NUMBER	PRICE EACH
Small pair gloves with liner	BG-S	9.95
Large pair gloves with liner	BG-L	9.95

NITRILE GLOVES

Textured and lightly powdered on inside, gloves are intended for industrial use only. Ideal for people with allergic reactions to rubber latex. Offer good hand protection from solvents, fluids, grease, oils, and grime. Do NOT use for protection in flammable or explosive atmosphere. Box of 100 only.



DESCRIPTION	PART NUMBER	PRICE EACH
Large size gloves 100 per box	NIT-GLOVE-L	8.99
Extra large size gloves 100 per box	NIT-GLOVE-XL	8.99

VINYL GLOVES

5 mil thickness-clear vinyl gloves. 100 per box. Available in large and extra large sizes.



DESCRIPTION	PART NUMBER	PRICE EACH
Large Vinyl gloves 100 per box	0505	4.25
Extra large vinyl gloves 100 p/box	0506XL	4.25

LATEX GLOVES

Durable gloves resist tearing.



DESCRIPTION	PART NUMBER	PRICE EACH
Latex gloves 100 per box	0502	4.65

FINISHING GEAR

COTTON LINERS

For latex gloves.



DESCRIPTION	PART NUMBER	PRICE EACH
24 ea. or 12 pair	0501	3.17

INVISIBLE GLOVES

Paste like substance provides protection against caustic and carcinogenic chemical products including hydraulic fluid, paints, inks, MEK, fuels. Apply 1 teaspoon to cover hands completely particularly cuticles and under fingernails waiting 2-3 minutes to dry. Washes off with soap and water. Pint container yields approximately 100 pair of gloves



DESCRIPTION	PART NUMBER	PRICE EACH
Invisible gloves pint jar	1211	8.56

PLY 9 GEL

Put on hands before using epoxy and wash off after finishing work. 12 oz. squeeze tube.



DESCRIPTION	PART NUMBER	PRICE EACH
12 oz.	PLY-9	5.99

WASH OFF HAND PROTECTION

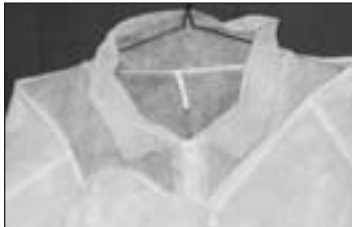
Invisible film protects skin against epoxies, dirt, gasoline, glues and much more. Prevents fingerprints on surfaces which are to be varnished or galvanized. Washes off with water. 32 oz. container lasts 6 months using 3 times daily.



DESCRIPTION	PART NUMBER	PRICE EACH
4 oz.	FR8-4	4.95
32 oz.	FR8-32	14.95

DISPOSABLE COAT

Polypropylene lab coat has snap front closure, collar and elastic wrists. Available in extra large only.



DESCRIPTION	PART NUMBER	PRICE EACH
Extra large lab coat	COAT	2.44

DISPOSABLE COVERALLS

Made of strong lightweight, rip resistant tyvek, spacebonded elafin material is nonabsorbent, so epoxy, paint or varnish will not soak through. Zippered front. For jobs that require only the arms be covered, order only the sleeves. Elastic at cuff and sleeve top hold the sleeve in position and makes them easy to put on or remove. Can be easily ventilated in hot weather by creating small holes or slits with either pocketknife or paper punch. To avoid fiberglass itch, use talcum powder on skin.



DESCRIPTION	PART NUMBER	PRICE EACH
Medium coverall	836-M	10.10
Large coverall	836-L	9.90
X-large coverall	836-XL	9.90
18" sleeves (pair)	838-2	5.90

TYVEK SLEEVES

For jobs that require only the arms be covered, order only the sleeves. Elastic at cuff and sleeve top hold the sleeve in position and makes them easy to put on or remove. Can be easily ventilated in hot weather by creating small holes or slits with either pocketknife or paper punch. To avoid fiberglass itch, use talcum powder on skin.



DESCRIPTION	PART NUMBER	PRICE EACH
18 INCH SLEEVES	838-2	5.90

EAR PLUGS

Disposable, with or without cord. Cylinder shaped, simply compress and roll to a small diameter and insert in ear.



DESCRIPTION	PART NUMBER	PRICE EACH
Ear plugs - NO cord	EP-2	0.50
Ear plugs w/cord	EP-1	0.55

PELTOR HEARING PROTECTOR

Designed for maximum comfort, headset provides maximum attenuation in severe noise environments such as jet engines, riveting, and other high noise areas. Headset features soft, broad ear cushions, ear seals with combined liquid and foam filling, and adjustable padded head band.



DESCRIPTION	PART NUMBER	PRICE EACH
Hearing protector	H7A	21.55

FINISHING GEAR

PARTICULATE RESPIRATOR

Comfortable and easy to wear maintenance-free respirator can provide protection equivalent to a rubber face piece. Advanced Electret Media enables the respirator to filter effectively without sacrificing breathability. Meets NIOSH 41 CFR 84 N95 requirements TC-84A-0007. Use for minerals, coal, iron ore, flour, etc. and liquid or non-oil based particles from sprays that do not emit harmful vapors. Do not use for paint spray, oil aerosols, gases, vapors, asbestos or sandblasting. Respirator does not supply oxygen.



DESCRIPTION	PART NUMBER	PRICE EACH
Particulate respirator	8210	1.41

DISPOSABLE RESPIRATOR

The no hassle disposable respirator features low breathing resistance, perspiration port and is completely assembled for use. Mask has a soft pliable face piece with rolled edge sealing flange. The low nosepiece allows for compatibility with eyewear. The unique sliding suspension make donning a snap. TC approved against organic vapors, paint, lacquer and enamel, dusts, mists and pesticides. Is not rated for isocyanate.



DESCRIPTION	PART NUMBER	PRICE EACH
Mask	WIL2211	22.35
Replacement parts:		
Filter retainer	WILRP78	2.15
prefilter (2 per pack)	WILT10	2.25

HOBBYAIR RESPIRATOR

Fresh air breathing system designed to deliver fresh safe air at an affordable cost to the nonprofessional painter. System 1 includes 1/3 hp two stage, single speed, air bypass motor, half face mask, with a beltline hook, 40 feet of hose, filter, cord and case. 110 volt.



DESCRIPTION	PART NUMBER	PRICE EACH
Fresh air respirator	HB01	375.00
FULL FACE	HB01F	486.00

PAINT & AIR SYSTEM - CITATION

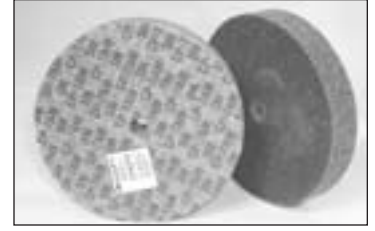
Citation 240 system includes two twin turbine air blowers in one case. Respirator system: motor - two stage, single speed 120 volts; half face mask of neoprene rubber with adjustable straps, 40 ft of kink resistant respirator hose with brass couplings. Sprayer system: motor- three stage , single speed 120 volts, Spray gun - all metal bottom feed uses 5 psi inbound air pressure can spray most coatings or finishes, 40 ft of 3/4 id pvc heavy duty hose with brass fittings, quick disconnect, wire strain protector and manual shut off valve.



DESCRIPTION	PART NUMBER	PRICE EACH
Breather /Sprayer System	CIT-240	932.48
4' whip hose	W01	\$15.75

CUT & POLISH WHEEL

3mm Scotch-brite cut and polish unitized wheel. Made of compressed and bonded Scotch-brite web. 7a medium grade. 6" diameter x 1" thick with 1/2" center hole.



DESCRIPTION	PART NUMBER	PRICE EACH
7a medium grade wheel	F3753	60.76

SANDPAPER-DRY

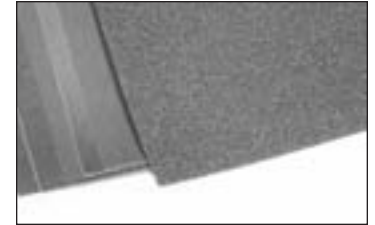
36 grit dry paper effective for sanding fiberglass and epoxy surfaces.



DESCRIPTION	PART NUMBER	PRICE EACH
36 grit - dry per sheet	02119	1.45

SANDPAPER - WET/DRY

100 to 2000 grit sandpaper.



DESCRIPTION	PART NUMBER	PRICE EACH
100 grit	11-30-10	1.69
220 grit	11-30-22	1.25
240 grit	11-30-24	1.15
280 grit	11-30-28	1.35
320 grit	11-30-32	1.25
400 grit	11-30-40	1.25
600 grit	11-30-60	1.47
1000 grit	11-30-100	1.99
1500 grit	11-30-150	2.12
2000 grit	11-30-200	2.22

QUICK CHANGE DISC HOLDERS-TURN ON

1/4" shank size fits most die grinder or drill motors. The latest abrasive technology allows you to change disc in one turn motion.



DESCRIPTION	PART NUMBER	PRICE EACH
3/4"	TP378	13.17
1"	TP379	13.17
1-1/2"	TP380	15.87
2"	TP381	15.87
3"	TP382	21.26

FINISHING GEAR

25MM BRUSH GLUEMASTER CAN



Can with the brush attached" simplifies gluing fabric and tapes to the structure. Pour either the Superbond glue or U500/SFMEK mixed glue into can. When finished clean the brush with MEK and attach the black cap to the end of the can. The can will now store the glue mixture. To keep the glue from drying in the can, use a tire cap to seal the end.

DESCRIPTION	PART NUMBER	PRICE EACH
25 MM CAN	SFKA25B25	42.75

FORD VISCOSITY CUP #4



#4 Ford viscosity cup. The Superlite manuals call for a #2 Zahn cup in measuring the viscosity of the primer and topcoat, but with the conversions below, a #4 Ford cup is much less expensive viscosimeter. This cup is made of molded CAB plastic, and it's designed to hook over the edge of the can while measuring the viscosity of the liquid. Here are the proper #2 Zahn to #4 Ford conversions: 17 seconds in the Zahn cup is equal to 10.88 seconds in the Ford cup; 23 seconds in the Zahn cup is equal to 14.72 seconds in the Ford cup.

DESCRIPTION	PART NUMBER	PRICE EACH
MOLDED CAB PLASTIC	SF-W3530	25.99

DOPE BRUSHES

Good quality 100% hog hair brushes for best poly-dope application, double thickness bristles. Set in epoxy cement to prevent shedding.



DESCRIPTION	PART NUMBER	PRICE EACH
2" width 2-1/4" bristle	11-25-2	6.04
4" width 3-1/4" bristle	11-25-4	14.98

METAL TUBULAR BRUSH

Horse hair bristle. 1/2" wide for acid, glue, cement, etc.



DESCRIPTION	PART NUMBER	PRICE EACH
brush each	11-25-12M	0.55